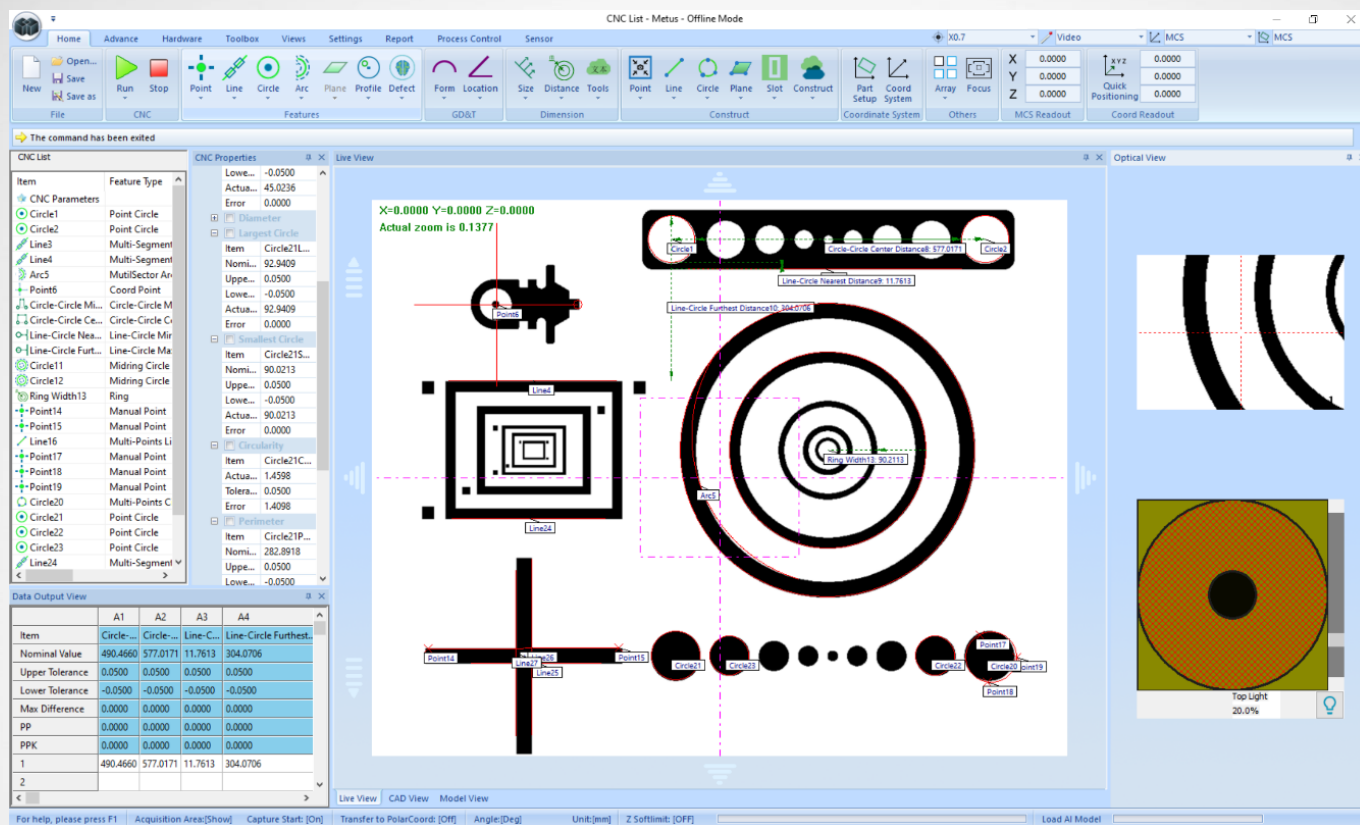


# METUS 2024.1 RELEASE NOTE

## D271-2401-1E



---

# Table of Contents

Table of Contents ..... 2

2024.1 SP10 Release Notes ..... 4

2024.1 SP9 Release Notes ..... 6

2024.1 SP8 Release Notes ..... 8

2024.1 SP7 Release Notes ..... 11

2024.1 SP6 Release Notes ..... 13

2024.1 SP5 Release Notes ..... 15

2024.1 SP4 Release Notes ..... 17

2024.1 SP3 Release Notes ..... 18

2024.1 SP2 Release Notes ..... 20

2024.1 SP1 Release Notes ..... 21

2024.1 Release Notes ..... 24

Installation Instructions ..... 25

Repair and Uninstall Instructions ..... 26

Recommended System Requirements ..... 27

Language Switch ..... 28

Contact Us ..... 29

---

# Metus 2024.1 Release Note

Metus 2024.1 added many new functions based on user feedback and the requirements of manufacturing and quality control processes. This version integrates these new functions and optimizes most of the existing functions.

Metus is a vision metrology software developed by the world's leading metrology company Hexagon Software Technology (Qingdao) Co., Ltd. Designed and developed by the world-renowned software development team PCDMIS, Metus has grown into a mature software with years of industry experience. During the development, the design team focuses not only on the metrological capability for ultimate accuracy, but the principle of easy operation. Metus 2024.1 is the exact vision metrology tool art integrating all this to meet our promise to all users and our pursuit for the future.

With a similar layout as Microsoft Office, Metus holds a number of view windows that are easy for the user to drag the location and adjust the size. A new user can get started easily if he/she is familiar with any of the Office software operation.

If you encounter a system-related problem after installing Metus 2024.1, it may be a correlation problem. This kind of problem is more obvious when using the unshipped machine for the first time. Please contact Metus technical personnel for help. You can also send the feedback for any software-related issues in our website:

<http://www.hexagonmi.com.cn>

---

# **2024.1 SP10 Release Notes**

**Version No.: 7.14.1.9916**

**Release Date: 03/14/2025**

- **MTS – 5144 Added the function of quick CNC Properties editing.**

The software has added a function for quick CNC properties editing. This function allows users to flexibly customize the CNC property list as they need, enhancing the operational convenience and efficiency.

- **MTS – 5359 Added the function of customized CNC table header.**

The software has added a new function for customizing the CNC table header. This function enables users to independently set the display list of the CNC table header, meeting diverse data display requirements.

- **MTS – 5384 Optimized the font format of the CNC table header.**

The software has optimized the font format of the CNC table header editing window to improve the overall coordination of the interface and the user's visual experience.

- **MTS – 5364 Optimized the format of Metus User Manual in Help**

The software has optimized the format of the Metus user manual in Help to enhance the user's reading experience.

- **MTS – 5157 Fixed the incompatibility issue between the HEXAI environment and Hikvision cameras.**

The software has fixed the problem that the Hikvision camera cannot be opened due to a conflict with the HEXAI environment when loading.

- **MTS - 5268 Fixed the problem that the features do not follow after relocating the Pan View.**

The software has fixed the problem that the features do not follow after relocating the Pan View.

- **MTS - 5050 Fixed the bug that the system does not save the image and correspondent xml file when using semi-auto method to capture a circle**

The software has fixed the problem the bug that the system does not save the image and correspondent xml file when using semi-auto method to capture a circle.

- **MTS-5422 Fixed the issue where the Pan View flickers when displaying data labels**

The software fixed the issue where the Pan View flickers when displaying data labels.

- **MTS-5423 Fixed the issue where the capturing direction of some features in closed contour scanning was inconsistent**

The software fixed the issue where the captured direction of some segments in closed contour scanning was inconsistent.

---

- **MTS-5440 Fixed the issue that the header “Motion Move” in the CNC List was not updating when the point selection method was set to DCC**

The software fixed the issue that the header “Motion Move” in the CNC List was not updating when the point selection method was set to DCC.

---

# **2024.1 SP9 Release Notes**

**Version No.: 7.14.1.9848**

**Release Date: 11/12/2024**

- **MTS-4693 Improved the auto lighting logic**

The software has optimized the operation logic of using auto lighting and the logic of frame dimming.

- **MTS-4585 Fixed the problem of displaying a cut image when using the focus function after loading the AI PATCH model**

The software fixed the problem of displaying a cut image when using the focus function after loading the AI PATCH model.

- **MTS-4650 Fixed the problem setting of defect score does not take effect**

The software fixed the problem that the setting of defect detection confidence does not take effect after being modified.

- **MTS-4690 Fixed the problem that the formula name in the calculator does not update after renaming the element**

The software fixed the problem that the formula name in the calculator does not update after renaming the element.

- **MTS-4710 Fixed the problem that the specified point cannot be created when picking point clouds**

The software fixed the problem that the specified point cannot be created when picking point clouds.

- **MTS-4679 Fixed the problem of array focusing failure after enabling auto-focus for a feature**

The software fixed the problem of array focusing failure after enabling auto-focus for a feature.

- **MTS-4479 Fixed the problem of software flashback when setting a coordinate based the fundamentals including a plane**

The fixed the problem of software flashback when setting a coordinate based the fundamentals including a plane.

- **MTS-4566 Fixed the problem of incorrect output of calculating value under the imperial system**

The system fixed the problem of incorrect output of calculating value under the imperial.

---

- **MTS-4594 Fixed the bug of flashback when constructing features**

The software fixed the bug of flashback when constructing features.

- **MTS-4682 Fixed the problem of round slot display error**

The software fixed the problem of round slot display error.

- **MTS-4595 Fixed the problem of incorrect coordinates built from laser points**

The software fixed the problem of incorrect coordinates built from laser points.

- **MTS-4728 Fixed the problem that the AI folder cannot be used in the copied and arrayed AI features**

The software fixed the problem that the AI folder cannot be used in the copied and arrayed AI features' properties.

- **MTS-4935 Fixed the problem of mutual conversion between Cartesian coordinates and polar coordinates when the position property name contains special characters**

The software fixed the problem of mutual conversion between Cartesian coordinates and polar coordinates when the position property name contains special characters.

---

# **2024.1 SP8 Release Notes**

**Version No.: 7.14.1.9766**

**Release Date: 10/18/2024**

- **MTS-4558 Added the function of path planning**

The software added the function of path planning in three motion modes (sequence priority, distance priority, sequence and distance priority). Previously the system could only proceed in the programmed CNC order. Through the motion planning mode, unnecessary stage motion and waiting times can be reduced. The overall inspection efficiency can be improved.

- **MTS-2740 Added the function of auto lighting**

The software added a new auto lighting function that quickly responds to light changes and adjust the light to an appropriate brightness without manual intervention, which saves a lot of manual operation time.

- **MTS-4224 Added the function of free switch between polar coordinates and Cartesian coordinates**

The software added the function of freely switching polar coordinates and Cartesian coordinate system to meet different calculation needs, this ensures that the program is compatible with and able to process diverse data.

- **MTS-4313 Added the function of 3D point cloud supporting CPU**

The software added the function of 3D point cloud computing supporting CPU. Compared with high-end GPUs, the hardware cost of CPU is usually lower. For projects or applications with limited budgets, using CPU for 3D point cloud computing can significantly reduce costs.

- **MTS-4470 Added the function of constructing circle from multi-arts**

The software added the function of constructing a circle from multiple arcs. This function is exclusively used when adopting AI model to detect a circle exceeding one FOV.

- **MTS-4011 Added the function of relevant model in CNC properties**

The software added the function of relevant model in CNC properties. By using this function, one trained model can be repeatedly used to detect same features, which reduces training time of new models and improves efficiency.

- **MTS-4460 Added the function of saving only the corresponding model and CNC without saving the corresponding images when saving the AI program file or saving it as another file**



---

Added the function of saving only the corresponding model and CNC without saving the corresponding images when saving the AI program file or saving it as another file.

- **MTS-4492 Added the function of image saving by a right-click on the feature in the CNC List**

The software added the function of image saving by a right-click on the feature in the CNC List.

- **MTS-4410 Added the function of using AI-Patch model to implement edge detection for several features in one FOV**

The software added the function that use one AI patch model to detect several edges in one FOV. The left features will be detected in the cutout images by traditional detection modes. This function helps improve the overall efficiency.

- **MTS-4306 Added the function of prompting when Metus cannot read the model**

The software newly added the function of prompting when Metus cannot read the model to facilitate users to quickly locate and solve the problem.

- **MTS-4405 Improved the inspection accuracy for circle measurements when selecting “smart edge” as edge detection methods**

The software improved the inspection accuracy for circle measurements when selecting “smart edge” as edge detection methods. The smart edge detection method follows the algorithm in PC-DMIS to improve the repeatability performance.

- **MTS-3996 Improved the function of manual square slot**

The software improved the manual square slot creation. The slot area can be rotated and scaled.

- **MTS-4415 Fixed the problem of timeout when zooming in on the focus in the speed mode.**

The software fixed the problem of timeout when zooming in on the focus in the speed mode.

- **MTS-4412 Fixed the problem that the AI\_Patch model cannot change the background color**

The software fixed the problem that the AI\_Patch model cannot change the background color.

- **MTS-4490 Fixed the problem that the AI model cannot be used for the feature of MinMax Point and Rectangle Point**

The software fixed the problem that the AI model cannot be used for the feature of MinMax Point and Rectangle Point.

---

- **MTS-4256 Fixed the problem that the header of the annotation in the loop operation is covered by the annotation name outside the loop**

The software fixed the problem that the header of the annotation in the loop operation is covered by the annotation name other than the loop.

- **MTS-4225 Fixed the problem of abnormal measurement result when creating True Position command from DXF**

The software fixed the problem of abnormal measurement result when creating True Position command from DXF circle features

- **MTS-4453 Fixed the problem that the previous coordinate system cannot be found when loading the elements after saving the program**

The software fixed the problem that the previous coordinate system cannot be found when loading new features after saving and calling the program.

---

## **2024.1 SP7 Release Notes**

**Version No.: 7.14.1.9565**

**Release Date: 09/06/2024**

- **MTS-2693 Added the Golden Sample detection mode**

The software newly added the golden sample function. By training with a set of OK pictures, it can detect two types of defects: OK and unknown. It can identify unexpected defective workpieces, reduce the outflow rate of defective products, and enhance customer satisfaction. The software adds the gold sample function, uses OK's picture set training, may detect OK and unknow two kinds of defects;

- **MTS-4159 Added the point interval filtering display function**

The software added the profile T value filter display function, users can customize point interval filter output. Before adding this function, when evaluating the profile using a closed - contour scan to construct a point cloud, the large number of displayed points caused the software to stuck and become unresponsive. This function filters the number of points, reducing the display on the interface and improving the user experience.

- **MTS-4232 Added the tolerance zone display function**

The software added the profile tolerance zone display function. Before this addition, there was no tolerance zone, and it was impossible to visually display the out-of-tolerance parts. After adding the tolerance zone, the parts exceeding the upper tolerance and the lower tolerance are displayed in red and yellow respectively, enabling users to easily scan and intuitively view the information.

- **MTS-3988 Added the focusing feedmode of DC controller**

The software added the focusing feedmode for the DC control cabinet, removing the speed control of the joystick during focusing. Without the feedmode, the operation was affected by the joystick speed. When the joystick speed was too slow, the DC control cabinet would pop up an error message. After adding the feedmode, the focusing operation was no longer affected by the joystick speed.

- **MTS-4267 Added the function of importing arcs as circles when importing DXF**

The software added the option to merge and import arcs as circles when importing DXF. After importing into Metus, they become a complete circle. This function simplifies repetitive operation for customer demands.

- **MTS-4308 Added the function of saving images for edge point features**

The software added the function of saving images for edge point features.

---

- **MTS-3231 Improved the display of the coordinate system value for laser point and move point**

The software added the display of the coordinate values of laser points and move points in the coordinate system and supported the editing of these coordinate values.

- **MTS-4155 Fixed the problem that the graphic interface does not align with the coordinate**

The software fixed the problem that the CAD View does not align with the coordinate setup.

- **MTS-4221 Fixed the problem that abnormal holes are not at the target position under fly-capture mode**

The software fixed the problem that abnormal holes are not at the target position under fly-capture mode.

---

# **2024.1 SP6 Release Notes**

**Version No.: 7.14.1.9435**

**Release Date: 08/09/2024**

- **MTS-3963 Unified the Hex.AI environment for the defect detection**

The software added the function of using the Hex.AI environment for model inference and detection, avoiding differences between the detection results in Metus and ViD.

- **MTS-3678 Added the function of AOI template**

The software added the AOI template. In industries such as semiconductors (such as PCB parts), there are many identical features and repeated dimensions within the same FOV. During programming, the large number of items in the CNC list makes the program lengthy. AOI template allows elements of the same module to be grouped into one template, and then the AOI template can be arrayed. This simplifies the CNC program and enables rapid programming. Please note the measurement elements must lie within the same FOV and with the same lighting condition.

- **MTS-3930 Added the function of Single Operator for Multiple Machines**

The software added the function of Single Operator for Multiple Machines Having one person monitor one machine is a waste of human resources. Using the one - person - multiple - machines function, one person can supervise four machines, reducing human and material resources and achieving cost - reduction and efficiency - improvement.

- **MTS-3823 Improved the function of Part Match for coordinate system**

The software improved the Part Match function to directly create a coordinate system without part setup.

- **MTS-3946 Improved the Part Match efficiency**

The software optimized the Part Match algorithm by using grayscale to improve the recognition speed.

- **MTS-3639 Fixed the problem that features cannot find the inserted coordinate system when a coordinate system is inserted before the program**

The software fixed the problem that after inserting a coordinate system before the program, the subsequent elements cannot find the coordinate system.

- **MTS-2995 Fixed the problem that the color depth of the point cloud scanned by the laser is displayed according to the y - value**

The software fixed the problem that the color depth of the point cloud scanned by the laser is displayed according to the y - value.

---

- **MTS-3917 Fixed the problem that the machine moves to the Z - axis origin when moving the sector circle detection box in the CAD View**

The software fixed the problem that the machine moves to the Z - axis origin when moving the sector circle detection box in the CAD View.

- **MTS-3290 Fixed the problem that construction points cannot be calculated in the best-fit coordinate system**

The software fixed the problem that construction points cannot be calculated in the best-fit coordinate system.

- **MTS-3938 Fixed the problem that the alarm signal of rotary table 2 is not cleared after an emergency stop**

The software fixed the problem that when there are two rotary table settings in the software, after pressing the emergency stop and then canceling it, the alarm signal of rotary table 1 is cleared, but that of rotary table 2 is not cleared. Only a restart could help use the rotary table 2.

- **MTS-3935 Fixed the problem that pressing Enter triggers the absolute position after the rotary table outputs an angle**

The software fixed the problem that pressing Enter triggers positioning when the turntable is in angle editing MTS-3935 turntable output angle press Enter to trigger the absolute position.

- **MTS-3915 Fixed the interface exceptions when clicking stop button during the operation of Probe CNC**

The software fixed the interface exceptions when clicking stop button during the operation of Probe CNC.

---

## **2024.1 SP5 Release Notes**

**Version No.: 7.14.1.9269**

**Release Date: 07/05/2024**

- **MTS-2750 Added the function of calling the Hex.AI environment for AI edge detection**

The software added the functions of using the Hex.AI environment to save pictures and xml files, and using Hex.AI for model inference and detection, avoiding differences between the detection results in Metus and ViD.

- **MTS-3846 Added the functions of associating AI folders for arrayed AI features and copying AI folders when copying features**

The software added the functions of associating AI folders for arrayed AI features and copying AI folders when copying features. If images are collected after arraying, it will not only cause excessive space occupation but also generate too many training models. To reduce unnecessary resource waste, when loading the AI edge - detection model in elements, during arraying, you can choose whether to associate the folder of the arrayed element. If yes, the arrayed element models will be shared; if no, the

- **MTS-3843 Added the profile dimension filtering display**

The software added the intuitive display for profile dimension filtering

- **MTS-3869 Improved the function that DXF - imported point clouds are not affected by coordinate transformations**

The software added the function that DXF - imported point clouds are not affected by coordinate transformations. When measuring the profile, importing point clouds required multiple coordinate system conversions, which was an intricate operation. Adding this function simplifies the operation and improves efficiency.

- **MTS-3868 Optimized the DXF graphics when saving the program**

The software optimized the DXF graphics when saving the program. After importing and editing a DXF file, the saved DXF result was the current DXF graphic instead of the original one.

- **MTS-3829 Fixed the problem of Huaxian microscope focus failure**

The software fixed the problem that the Huaxian microscope cannot focus.

- **MTS-3799 Fixed the problem of microscope overlapping image motion**

The software fixed the problem of microscope overlapping image motion.

---

- **MTS-3872 Fixed the problem that it is difficult to select the T - value label in the graphic window with the mouse**

The software fixed the problem that it is difficult to select the T - value label in the graphic window with the mouse

- **MTS-3873 Fixed the problem that the graphic is separated from the actual graphic during profile analysis**

The software fixed the problem that the graphic is separated from the actual graphic during profile analysis



---

## **2024.1 SP4 Release Notes**

**Version No.: 7.14.1.9154**

**Release Date: 06/07/2024**

- **MTS-2750 Upgraded the function of AI Edge detection to 2.0**

Advantages of AI edge-finding version 2.0:

- It can directly label when element grabbing is abnormal in Metus, without the need for further labeling in ViD.
- During training, it is possible to train the detection area instead of the whole image, greatly reducing the training time.
- Multiple elements can be trained in a queue, and the corresponding models can be automatically exported, reducing a large amount of manual operations.
- For Metus detection, you only need to turn on the corresponding AI switch to automatically load the corresponding model for detection.

Please note the following:

- Turn on the image saving switch before collecting pictures.
- Collect colored pictures for training.
- It is recommended to collect more than 20 pictures for training, otherwise the detection effect of the model may not satisfy the needs.

- **MTS-3644 Added the function of batch import of circles with the same diameter**

The software added the function of batch import of circles with the same diameter. If the imported DXF contains a large number of circles with different diameter specifications, it takes a lot of time and effort to select them one by one. Adding the batch import function can greatly save programming time and improve programming efficiency.

- **MTS-3454 Improved the function of importing DXF based on contour connection between features**

The software improved the function of importing DXF features according to the contour connection direction.

- **MTS-3800 Fixed the problem of slow movement speed before scanning.**

The software fixed the problem of slow movement speed of the machine table before laser scanning.

- **MTS-3810 Fixed the problem of focus failure during automatic optical calibration**

The software fixed the problem of focus failure during automatic optical calibration.

- **MTS-3776 Fixed the problem that the automatic line scale cannot be used after automatic optical verification**

---

The software fixed the problem that the automatic line scale cannot be used after automatic optical verification

## **2024.1 SP3 Release Notes**

**Version No.: 7.14.1.8891**

**Release Date: 04/30/2024**

- **MTS-3210 Added the function of saving the image and its annotation xml file when failed to detect the edge**

The software added the function of saving the image and its annotation xml file when failed to detect the edge to improve sample collection efficiency.

- **MTS-3665 Supported the using of CPU to load AI edge detection model**

The software supported CPU to load AI edge detection model meet the situation where customers only have a CPU, they can also use the AI edge-grabbing function for edge detection, saving hardware costs and improving profitability.

- **MTS-3884 Added BYD method for calculating profile**

The software grafted BYD method for online profile measurement of irregular features. The new calculation method is applicable to more application scenarios and meets more user needs

- **MTS-3220 Supported batch modification of vector directions after importing**

The software supported batch modification of vector directions after importing DXF to help user program more efficiently.

- **MTS-3111 Fixed the bug of overlapping edge points when importing the DXF drawing**

The software fixed the bug of overlapping edge points when importing the DXF drawing with customized density.

- **MTS-3112 Fixed the bug that T-value is not perpendicular to detected point position**

The software fixed the problem that after importing DXF to evaluate the profile, the T values of some edges point to the non-vertical points direction.

- **MTS-3408 Fixed the bug that FOV graphic matching fails after rotation**

The software fixed the problem that the FOV graphic matching function fails after the workpiece is rotated by a certain angle.

- **MTS-3295 Fixed the bug that TCP/IP protocol can only turn on the whole six-ring eight-zone light when controlling it through Vision Box**

---

The software fixed the bug that TCPIP protocol can only turn on the whole six-ring eight-zone light when controlling it through Vision Box

---

## **2024.1 SP2 Release Notes**

**Version No.: 7.14.1.8643**

**Release Date: 03/29/2024**

- **MTS-3234 Supported UWC5000 controller**  
The software added support for UWC5000 controller.
- **MTS-3276 Added the function to open ViD for different versions**  
The software adds the function that Metus can open different versions of VID (VID full function, VID app, VID lite).
- **MTS-3165 Improved the preprocessing function supported by edge points**  
The software optimizes that preprocessing can also be supported when using edge points to increase the diversity of user operations.
- **MTS-3270 Improved the function for the Feature Group View**  
The software added the foolproof and prompt message for Feature Group View.
- **MTS-3143 Improved the function of fuzzy matching**  
The software optimized the interface display when using fuzzy matching and the characters entered can be deleted at once.
- **MTS-3241 Fixed the bug that Metus cannot load Golden Sample model**  
The software fixed the bug that Metus could not load the GoldenSample model exported by ViD.
- **MTS-3261 Supported the function of multiple cross sections**  
The software fixed the bug that the cross section view cannot pick up multiple sections.

---

## **2024.1 SP1 Release Notes**

**Version No.: 7.14.1.8337**

**Release Date: 02/01/2024**

- **MTS-3013 Added the function of displaying coordinates in the current coordinate system for point and arc in CNC**

The software added the function of displaying coordinates in the current coordinate system for point and arc in CNC to make it convenient for users to read the coordinates of the current point and arc elements in the current coordinate system and change the position of the elements by modifying the coordinate values.

- **MTS-3010 Integrated the Huaxian 3D microscope**

The software supported this new microscope to better meet the needs of more customers.

- **MTS-2992 Added the function of manual grid in the Live View center**

The software added the manual grid function. Users can pull out a grid matching the size of the real workpiece in live view. Please note that the grid is always located in the center of the view.

- **MTS-2993 Added the function of manual square slot**

The software added the manual grid function. Users set a slot based on the size of the real workpiece in live view. Please note that the slot cannot be rotated but can only be translated.

- **MTS-2993 Added the CNC label for the picked points in the point cloud interface**

The software added the CNC label for the picked points in the point cloud interface to facilitate users to view and check their own point cloud operation.

- **MTS-3178 Optimized the Feature Group View**

The software optimized the color change of the Feature Group View during program operation to facilitate users to understand the states before and after the running. When executing the retest group, the colors of the group before and after the run were the same, and it was impossible to distinguish the running group and other groups selected for retest during the run. Therefore, the colors of the groups before and after the run were distinguished to facilitate users to understand the measurement state. After grouping, colors could be selected in "Change Fixture Background" in the measurement view; the color of the retest group could be selected in "Settings | View

---

Colors | Selection"; the color during operation was yellow, the color of NG after operation was red, and the color of OK after operation was green.

- **MTS-3124 Optimized the EF3 controller to support zooming while moving**

The software optimized the EF3 controller to support zooming while moving in the speed mode.

- **MTS-3180 Optimized the region extraction to directly generate a mask image without the option of cropping**

The software optimized the region extraction to directly generate a mask image without the option of cropping. After selection, the image was clearly black and white with obvious boundaries

- **MTS-2940 Fixed the problem that the Z values of the start and end points of the intersection line of two planes were the same**

The software fixed the problem that the Z values of the start and end points of the intersection line of two planes were the same.

- **MTS-3110 Fixed the problem of inconsistent vector directions when importing DXF drawings.**

The software fixed the problem of inconsistent vector directions when importing engineering drawings.

- **MTS-3134 Fixed the problem of point cloud misalignment when point cloud pixels were fixed to the camera size**

The software fixed the problem of point cloud misalignment when point cloud pixels were fixed to the camera size

- **MTS-3041 Fixed the problem of slow software processing speed when several groups were selected for measurement in array - automatic grouping.**

The software fixed the problem of slow software processing speed when several groups were selected for measurement in array - automatic grouping.

- **MTS-3155 Fixed the problem of abnormal annotation calculation in the calculator under the inch unit**

The software fixed the problem of abnormal annotation calculation in the calculator under the inch unit.

- **MTS-3042 Fixed the problem of too long running interval between two groups when several groups were selected for measurement in array - automatic grouping**

The software fixed the problem of too long running interval between two groups when several groups were selected for measurement in array - automatic grouping.

---

- **MTS-3188 Fixed the problem that the workpiece could not be located when moved within the field of view in AI positioning**

The software fixed the problem that the workpiece could not be located when moved within the field of view in AI positioning

- **MTS-3200 Fixed the problem that the arc did not make up the entire circle when using Midring Circle Command**

The software fixed the problem that the arc did not complete the entire circle when using Midring Circle Command.

---

## **2024.1 Release Notes**

**Version No.: 7.14.1.8161**

**Release Date: 01/08/2024**

- **MTS-2750 Added the AI edge detection function; solved the problem that the traditional edge detection method could not accurately detect when the boundary was not clear, and the elements were complex**

The software added the new modes for AI automatic edge detection: Edge extraction, AI positioning, and AI fitting functions. When the traditional edge detection method could not detect, different AI edge detection functions could be selected according to different workpiece conditions, which was convenient for dealing with various complex workpiece conditions.

- **MTS-3061 Added the fuzzy matching function for AI model selection**

The software added the function of fuzzy matching for AI model selection. When there were many model files, users could not quickly find the required model. Therefore, adding the fuzzy matching function could facilitate users to quickly find the required model.

- **MTS-3156 Added the option of importing vectors when importing DXF**

The software added the option of importing vectors when importing DXF. When the DXF file was relatively large, the response time of the software import was long. Adding the function of choosing whether to import vectors, and not importing vectors could speed up the importing process.

- **MTS-3062 Fixed the problem of missing or extra lines when importing engineering drawings.**

The software fixed the problem of missing or extra lines when importing DXF.

- **MTS-3138 Fixed the function that the picking box appeared when double-clicking the point cloud interface to refresh**

The software fixed the bug that a double click in Point Cloud View will bring up a picking box when magnifying the point cloud.



---

# Installation Instructions

Follow these steps below to install the Metus:

## Step 1: Log in as an administrator

Before installing the new Metus version, please read the System Requirements. The software installation also requires related dongle, and our engineers will notify this information prior to the installation.

- Check the computer properties before installation. Right click on “My computer” icon and select [Properties] to have a check.
- Check the graphics card display properties of your computer in task manager.

## Step 2: Back up your previous settings

By default, the new Metus will clear and replace the old version of Metus under the default path. Please back up the old software or important parameters if needed.

## Step 3: Install the software

The following steps help you complete the basic steps of software installation. If the user is running a different version of Metus or is installing in a customized way, the installation steps may vary from what's here. In addition, software licenses may provide different options as well.

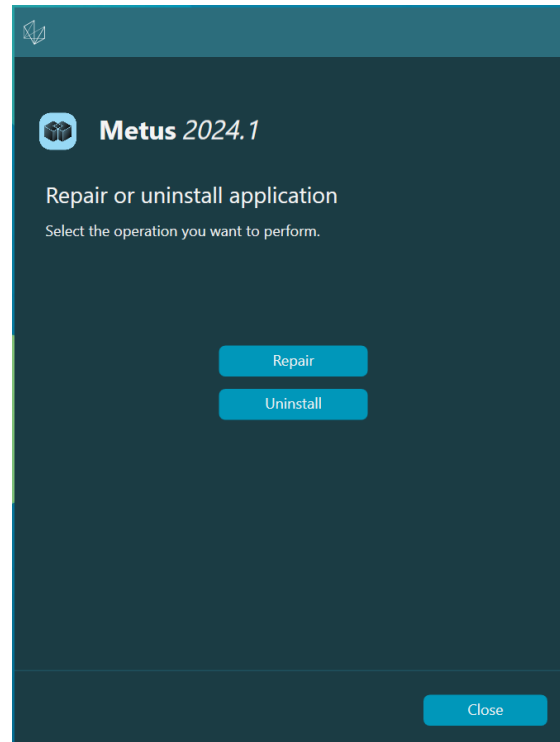
### To install the software:

1. Double-click the installer named as “Metus 2024.1 \_###\_#.#.#.#####\_x64.exe”, the symbol “#” represents the specific version number and the Git generation number, and follow the system prompt to install.
2. In the initiating window, read the **Software License Agreement** and check “**I agree with the End User License conditions**”.
3. Set the Software installation path by default or by personal need. The software will be default to the path: C:\Program Files\Hexagon\Metus. If you want to change and appoint the path, input the desired path or click “more” to browse in a window;
4. Click “install” and follow prompts;
5. After the installation, the software shortcut icon appears on the desktop. Operation completes.

---

# Repair and Uninstall Instructions

After the installation, double-click on the Metus.exe file to repair or uninstall. See below image as an example:



**Repair** - this option helps reinstall the software with all the original files, which fixed the problem caused by any lack of necessary files.

**Uninstall** - this option guides you to remove the software from the installation location. You can also uninstall the software directly from control panel.

---

# Recommended System Requirements

Attention calls for 32-bit Windows users! Metus 2024.1 will no longer support 32-bit Windows. Metus 2017R 3 is the last 32-bit version of Metus supported by Hexagon Manufacturing Intelligence. If you have not already done the following, use the latest stable Windows operating system (such as Windows 10) or update the measuring device operating system and hardware (personal computers) to the latest 64-bit system.

**Customers who install the latest operating systems will benefit from the following aspects:**

- Significant enhancements in operation security
- Mobile workers have wider device options
- Dramatic improvement in work efficiency
- Excellent management, lower purchasing cost

## **Operating system**

64-bit, Windows 10

## **Microsoft .NET Framework**

Microsoft.NET Framework 4.5.2 for Windows

## **RAM**

4 GB or above

## **CPU**

Intel core i5-6700 and above

## **GPU**

4 GB or above

## **Hard Disk**

256 GB SSD + 1TB HDD and above

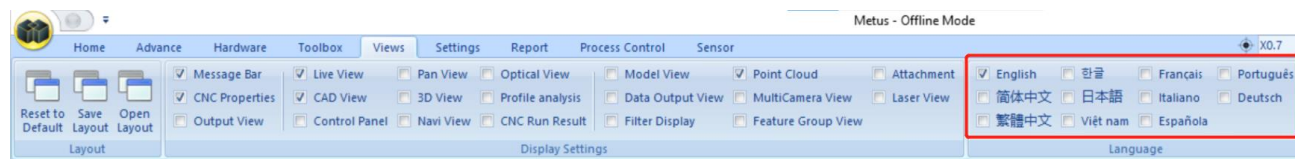
## **Display**

1280X 1024 or higher screen resolution

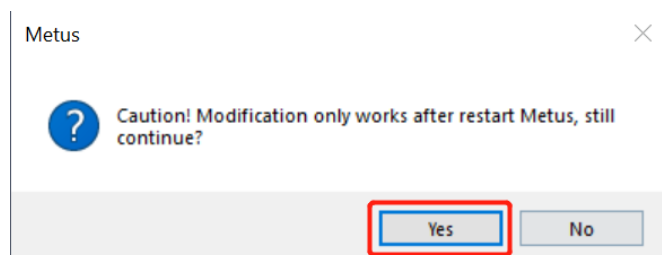
## Language Switch

The initial installation settings file for Metus 2024.1 contains user interface files for all supported languages. When installing Metus 2024.1, the software installs language files in accordance with the user's operating system language.

To Run Metus 2024.1 in a language that is different from the operating system language, select view tab | language, and then check the language you want.



When you click the desired language, the Metus language information bar will prompt you that the application will become valid only when restarted. Select “Yes”, and Metus 2024.1 will close immediately and reopen and display in your selected language.



---

## Contact Us

If you have participated in the Metus 2024.1 technology preview, please post your feedback on the corresponding technology preview forum at <http://u.hexagonmi.com.cn/post.aspx>.

If you are currently using Metus 2024.1 release version and need technical support, please visit <https://www.hexagonmi.com.cn/product> to contact us at any time. What's more, a live call on 400-6580-400 of Hexagon Intelligent Manufacturing Technology Co., Ltd is also welcomed.

Thanks for choosing Metus!