



## PC-DMIS Gear 2.6 Release - Release Notes -



## Contents

General System Requirements.....	2
Minimum Requirements.....	2
Recommended Minimums.....	2
Installing PC-DMIS Gear 2.6.....	4
Step 1: Check System Requirements .....	4
Step 2: Install PC-DMIS Gear 2.6 .....	4
Step 3: Launch PC-DMIS Gear 2.6 .....	9
Administrator Privileges Explained.....	9
Information about this Release .....	10
New Product Information .....	11
Gear 2.6 SP1 Release.....	11
Gear 2.6 Release .....	11
Release Notes - 2.6 SP1 .....	12
Installation.....	12
Release Notes - 2.6 .....	12
Licensing.....	12
Contact Hexagon Metrology .....	13

## General System Requirements

### Minimum Requirements

- PC-DMIS Gear 2.6 operates under the following:
  - Windows XP
  - 32-bit and 64-bit Vista
  - 32-bit and 64-bit Windows 7

PC-DMIS Gear 2.6 operates with the 32-bit version of PC-DMIS.

- Pentium-IV or higher processor is suggested
- 2 GHZ XEON or Intel processor
- 2 GB of RAM is recommended
- 1 GB of free hard drive space minimum for the application
- SVGA capable monitor
- DVD drive
- USB port available
- Supports a screen resolution of 1280 x 1024 or higher
- Microsoft® .NET 4.0
- Internet Explorer versions 7, 8, or 9.0.9 and higher

### Recommended Minimums

- 2 GHZ or higher Duo-Core processor for improved performance
- 4 GB of RAM or higher
- 2 GB of free hard drive
- SVGA capable monitor
- DVD drive
- 2 USB ports available
- Microsoft® .NET 4.0
- Internet Explorer version 9.0.9 and higher

**NOTE:** Depending on your specific needs, the recommended system specifications for this version of PC-DMIS Gear 2.6 may be much higher. A more substantial computer system may be required to accommodate part programs using Automation or complex Reporting objects. Be sure to consult with your PC-DMIS Gear distributor to find out the type of computer system you will need in order to run this software at its optimum capability.

**IMPORTANT:** When using 3rd-party drivers you should contact your local Hexagon representative to ensure Operating System compatibility.

**ANTI-VIRUS SOFTWARE:** The Sophos® Anti-virus tool was used by Hexagon while testing PC-DMIS Gear 2.6. The performance of any other anti-virus tool will need to be confirmed by the user.

<http://sophos.com/products/enterprise/endpoint/security-and-control/>

## Installing PC-DMIS Gear 2.6

To install the application, follow these steps below:

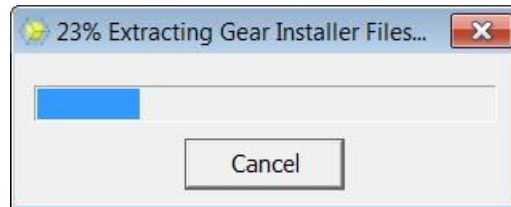
### Step 1: Check System Requirements

Before you attempt to install a new PC-DMIS Gear 2.6 version, ensure that your computer system meets the minimum system requirements. Your IT person can help you with this.

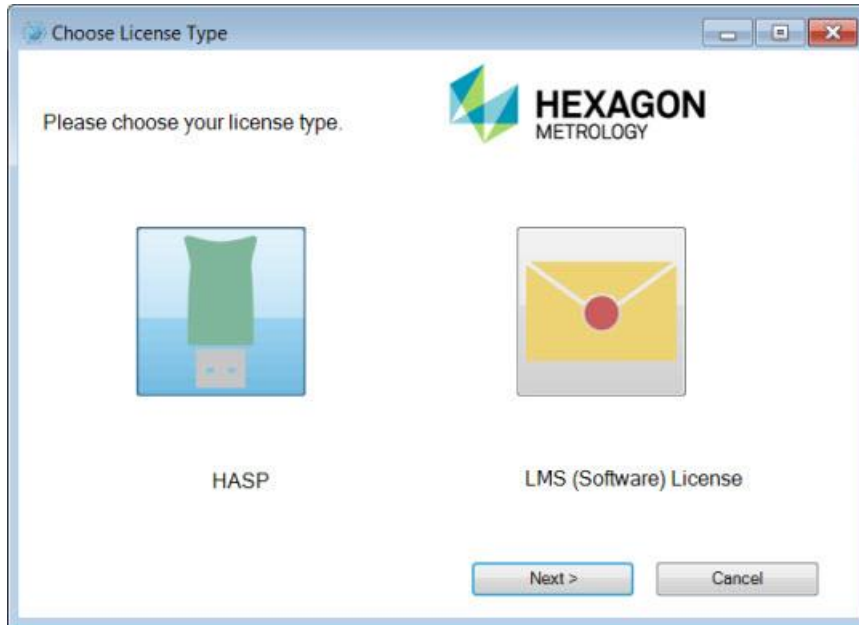
- To get your computer's properties, highlight the **My Computer** icon, right-click on it, and select **Properties**.
- To check the display properties for the graphics card, select **Start | Settings | Control Panel**, and then select **Display and Settings**.

### Step 2: Install PC-DMIS Gear 2.6

1. Ensure your USB portlock is connected to your machine.
2. Locate the PC-DMIS Gear 2.6 install file on your installation media; or if you downloaded it, open the directory containing the downloaded file.
3. Double-click on the .exe file to begin the installation process. If presented with a security warning, click **Run**. The files are extracted to a temporary directory:



The **Choose License Type** screen appears:



4. Select one of the following license types:

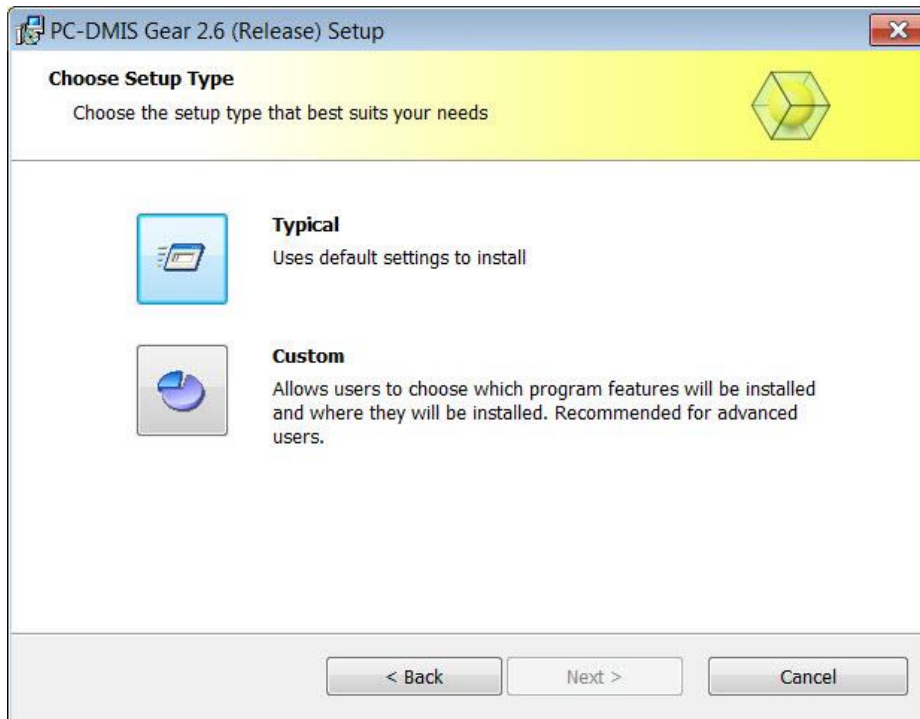
- HASP - If you have a physical USB portlock, ensure that it is connected to your computer, and then select this license type. It is selected by default.
- LMS (Software) License - If you have been issued a software license (called an Entitlement ID), or if you are connecting to a local license server, select this license type.

Click Next.

5. The main setup screen then appears:

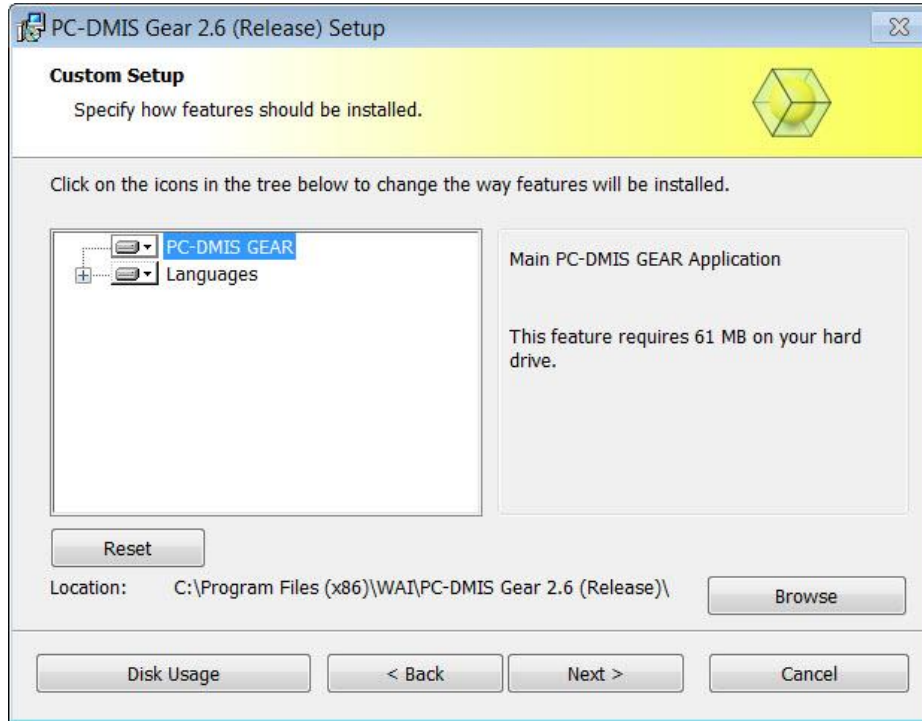


6. Click **Next**. The **Choose Setup Type** screen appears:




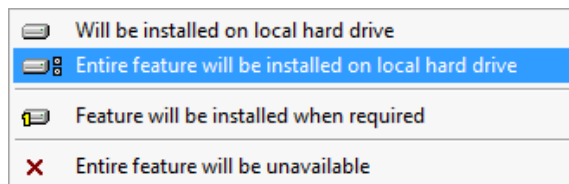
7. Choose a setup type.

- **Typical:** This option sends the file to this default installation location:  
C:\Program Files (x86)\WAI\PC-DMIS Gear 2.6 (Release)\
- **Custom:** This option lets you specify the components to install, as well as the installation location. A screen similar to the following screen opens:



### Customize Installed Features

By default, all program components are selected to be included in the installation. You can use the tree view to customize when or if these features are installed. To do this, click the small drop-down icon  next to the component to exclude. You will see a drop-down list.





Choose the desired option:

- **Will be installed on local hard drive** - The selected feature will be installed.
- **Entire feature will be installed on local hard drive** - The entire feature will be installed. This means sub-features of the selected feature will also be installed.
- **Feature will be installed when required** - The feature will only be installed if required during the installation process. Some files are informational and are not required for the application to run. These may include documentation or other files.
- **Entire feature will be unavailable** - This excludes the component from installation.

Click **Reset** at any time to reset the items to the default selection.

### Customize Installation Location

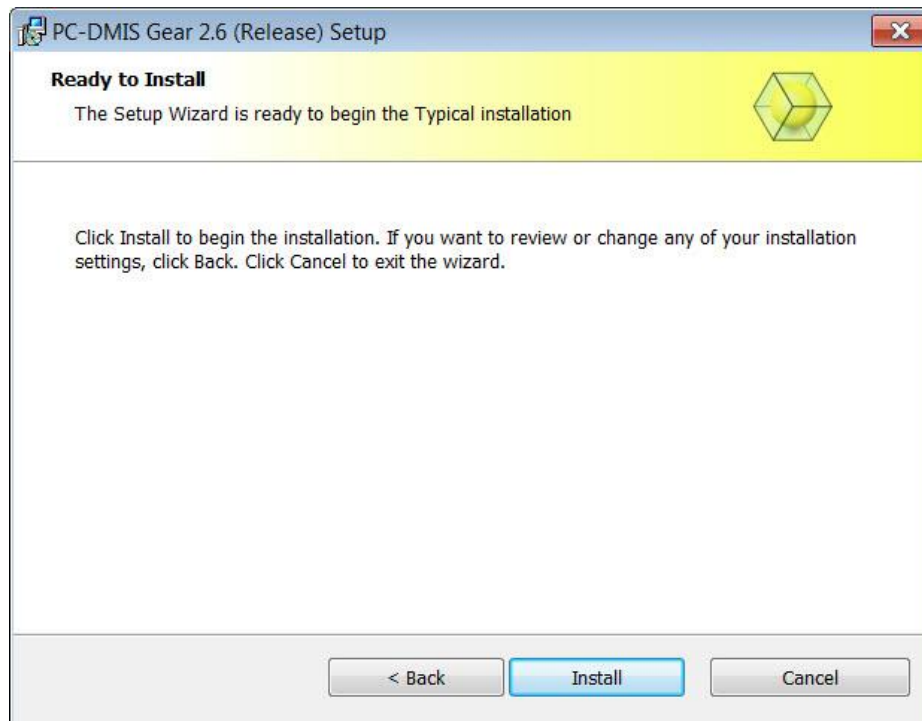
By default, the program installs to this location:

C:\Program Files (x86)\WAI\PC-DMIS Gear 2.6 (Release)\

To change the default location, click the **Browse** button and navigate to the directory on your computer you want to hold the program files. When you click **OK**, the **Location** field will change to show the selected location.

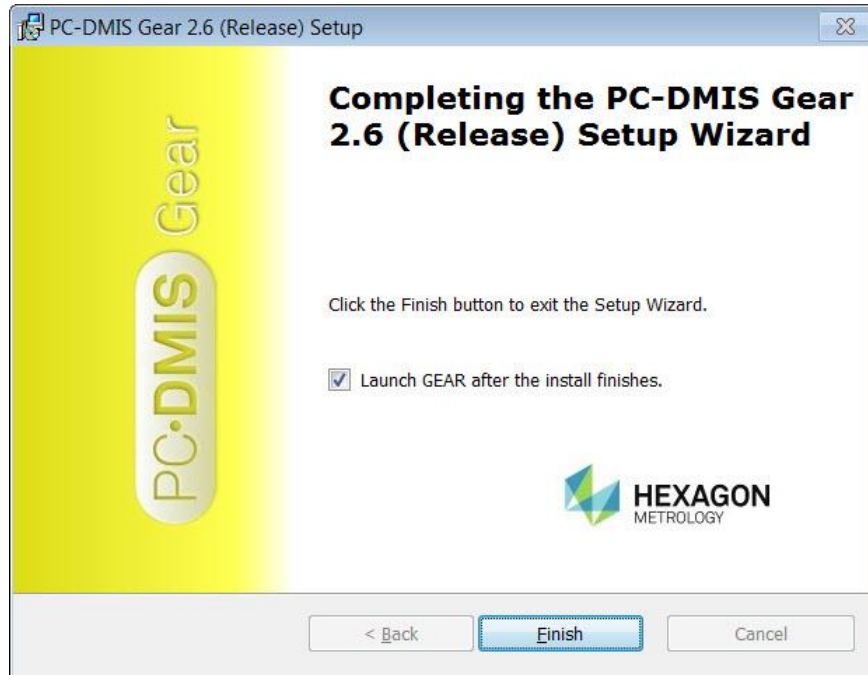
Click **Next** when finished customizing the install.

8. Once the installation has all the information it needs, the **Ready to Install** screen appears:



9. Click **Install**. When the installation finishes, this final screen appears:

10. Once installation finishes, you will see this final screen:



- **Launch GEAR after the install finishes** - Marking this check box launches the application once you click **Finish**.

11. Click **Finish** to close the installation program. PC-DMIS Gear 2.6 is now installed.

### Step 3: Launch PC-DMIS Gear 2.6

1. When launching this version of PC-DMIS Gear, choose **Start**, then **All Programs**, then the **PC-DMIS Gear 2.6** folder, and then **PC-DMIS GEAR**.
2. From the list of shortcuts, right-click on the **PC-DMIS GEAR** icon and select **Open** or **Run as administrator** (see “Administrator Privileges Explained” below).



#### Administrator Privileges Explained

When you select the PC-DMIS Gear option to measure a gear, PC-DMIS Gear starts PC-DMIS in order to perform the measurement. Therefore, whether you run PC-DMIS Gear as a standard user or as an administrator depends on how you are running PC-DMIS:

- If you are running PC-DMIS as an administrator, you need to run PC-DMIS Gear as an administrator.
- If you are running PC-DMIS as a standard user, you can run PC-DMIS Gear as a standard user or as an administrator.

## Information about this Release

We at Hexagon Metrology are proud to bring you this new version of PC-DMIS Gear 2.6. This Enterprise Metrology Solutions platform brings together new aspects of PC-DMIS Gear for the development of a complete manufacturing process control solution. Available in this release are variations of PC-DMIS Gear designed to assist with every aspect of the fabrication and quality control process. The newly created packages include Cylindrical Gear, Bevel Gear and Vision.

The testing of this version has been significant. We'd like to take a moment to discuss this process and also make you aware of the various components of testing.

Testing is comprised of two parts. These can be described as functional testing and integration testing. The vast majority of testing effort goes on in the functional area. This is the testing that determines that specific functions that are core to the software, regardless of what type of machine is used, are working correctly. The integration testing is essentially a testing of the interface with a particular type of machine.

In the ideal scenario, Hexagon Metrology would have access to at least one of every piece of hardware that is operating in the field running PC-DMIS Gear. However, in practical terms, this is impossible. This integration test plan is then performed on as many types of machines as we have available.

Should you experience problems with your system after installing PC-DMIS Gear 2.6, it could possibly be an integration problem. If it is a problem of this nature, it will probably be evident immediately upon first use of the possibly untested configuration. Should such a problem materialize, you will be given the highest priority for correcting these problems. Please call Tech Support immediately to report any integration problems.

For existing users of PC-DMIS Gear who currently have earlier versions of PC-DMIS Gear installed, it is advised that PC-DMIS Gear 2.6 be installed into a new directory. In this way, you can be assured of continuous use of the existing version should problems arise with this newer version.

## New Product Information

### **Gear 2.6 SP1 Release**

Prior to the release of PC-DMIS Gear 2.6 SP1, version 2.6 was the last official release of PC-DMIS Gear by Hexagon Metrology.

For a listing of the enhancements for the 2.6 SP1 Release, refer to "[Release Notes – 2.6 SP1](#)".

### **Gear 2.6 Release**

**Release date:** November 11, 2014

Prior to the release of PC-DMIS Gear 2.6, version 2.5 was the last official release of PC-DMIS Gear by Hexagon Metrology.

For a listing of the enhancements for the 2.6 Release, refer to "[Release Notes – 2.6](#)".

## **Release Notes - 2.6 SP1**

### **Installation**

- Added the Visual C++ 2008 redistributable package to the PC-DMIS Gear installer as a prerequisite.

## **Release Notes - 2.6**

### **Licensing**

- Added support for LMS licensing.

## Contact Hexagon Metrology

For further information regarding this release of PC-DMIS Gear 2.6, please feel free to contact <http://hexagonmetrology.us/contact-us> or visit [www.pcdmis.com](http://www.pcdmis.com).

Hexagon Metrology Technical Support can be reached by calling (800) 343-7933.