



HEXAGON
MANUFACTURING INTELLIGENCE

PC-DMIS 2018 R1
- Release Notes -



Contents

Release Notes	1
Information about this Release	12
Installing the Software	14
Step 1: Check System and Hardware Requirements	14
Step 2: Log on as an Administrator	14
Step 3: Back Up Existing Settings.....	14
Backing Up Machine Files for an Xcel CMM or a Sharpe Controller	16
Backing Up Machine Files for a CMM with a DEA Controller	17
Step 4: Install the Software	18
LMS License Setup	20
Administrator Privileges Explained	24
Step 5: Copy Files after Installation.....	25
Copying Machine Files for an Xcel CMM or a Sharpe Controller	26
Copying Machine Files for a DEA CMM with a DEA Controller	26
Step 6: Launch the Software for the First Time	27
Note About CMMs Using RS-232 Communications	31
Updating the Software	32
Repairing or Removing an Installation.....	33
Running the Software in Another Language	34
Installing Non-English Help Files from Language Packs	35
Troubleshooting.....	36
Startup is Slow	36
Updating the Software Results in a "(407) Proxy Authentication Required" Message	36
Setting Up the Network to Send Crash Reports.....	37
Installing on Top of an Existing Version Results in Unexpected Behavior	37
Running the Legacy DPUPDATE.EXE Does Not Work	38
Contact Hexagon Manufacturing Intelligence	38
Appendix A	39
Recommended System Requirements.....	39
Operating System	39
Microsoft .NET Framework	39
RAM	40
CPU	40
Graphics.....	40
Hard Drive.....	41
Display	41
Connectivity	41
Browser.....	41

PC-DMIS 2018 R1 Release Notes

Anti-Virus Software	42
Solutions for CMMs Using RS-232 Communications	42
Providing LMS Licensing Information to the Installer from the Command Line	43
Appendix B	46
Understanding File Locations.....	46
Public Documents.....	46
Public Documents (Reporting Directory)	46
Public Documents (Fixturing)	46
Program Data Files [Hidden]	46
User Data Files.....	47
Required User Access Rights	47
File System.....	47
Registry	48
Notes	48
Appendix C	49
First-Time Installation with Flexible Fixturing	49

Release Notes

PC-DMIS 2018 R1 is a significant development release of the software. For detailed information and video tutorials about this release, log on to hexagonmi.com/products/software.

Featured Items

- We added the **To Points Toggle** icon to the Auto Feature toggle bar in the **Auto Feature** dialog box (**Insert | Feature | Auto**). This icon is available for auto contact features of type Plane, Circle, and Cylinder. If you select the icon, PC-DMIS creates the feature as individual Vector Points with the associated shape constructions. PC-DMIS uses the hits of the auto feature to obtain the Vector Points. PC-DMIS applies the Best Fit Recompensate algorithm to the Vector Points to compute the constructed feature.

For details and examples, see the "To Points Toggle" help topic in the PC-DMIS Core documentation.

See PCD-128292, PCD-123563, and PCD-123565.

- The Q-DAS Configurator interface is integrated into PC-DMIS (**Operation | Q-DAS | Open Configurator**). See PCD-125161.
- We added QuickSet control to PC-DMIS. This control brings flexible measurement strategies to Quick Features and GD&T selection. You can activate this control via a double-click gesture when you use Quick Features or GD&T selection. The control offers a small interface for you to change the parameters of features that you are creating through that gesture. See PCD-128368.

- If a measurement routine contains a mesh data object that aligns to a CAD model, you can use the Quick Feature method (Shift + single mouse click) to create a Laser auto feature. This feature requires a laser probe that is set as the active probe. It supports all Laser auto features (Surface Point, Edge Point, Plane, Circle, Round Slot, Square Slot, Flush & Gap, Polygon, Cylinder, Cone, and Sphere). See PCD-125541.
- You can set the graphical representation of a selected pointcloud (COP). PC-DMIS stores the setting when you save the measurement routine. To set the representation, right-click a COP in the Edit window, or right-click a COP label in the Graphic Display window to view the **COP Display** menu options: **Smooth**, **Flat**, **Two sided**, and **Mesh display**. For complete details, including examples, see the "Pointcloud Graphical Representation" topic in the PC-DMIS Laser documentation. See PCD-63625.

You can use the **Default COP Display** list in the **Pointcloud** area on the **OpenGL** tab in the **CAD and Graphic Setup** dialog box (**Edit | Graphic Display Window | OpenGL**) to set the default COP display graphical representation. The valid selections are **Smooth** (the default), **Flat**, and **TwoSided**. The display setting is used when you first create the pointcloud COP feature. See PCD-128052.

When you create laser scans with the **Mesh Display** option on a portable arm, the mesh display graphical representation is stored when you save, close, or re-open the measurement routine. The mesh display is also kept for the pointcloud alignment and other COP operations, except in cases where the pointcloud is changed (such as when using the SELECT or FILTER function). If you edit the pointcloud, the mesh display is lost and the COP displays as points. See PCD-127002.

Auto Features - Vision

- The "Passthru To Controller" command sends commands to the NC controller. You can now use the prefix "CWS", which represents the Precitec controller (CWS) and the token "#" to send commands to the Precitec controller. This solution is available for FDC-SLC and FDC-VisionBox. It does not work with embedded controllers. See PCD-75064.
- We enhanced Ring Light migration. If you load a measurement routine on a machine with a Ring Light configuration that is different from the one that the measurement routine was created with, PC-DMIS attempts to migrate the Ring Light. If the illumination values would cause an attempt to measure the feature with no illumination, then the Ring Light is set with all of the bulbs on and with the average intensity value of the setting that was used in the original Ring Light configuration. If any other light is active for the measurement, such as the top light or bottom light, then PC-DMIS does not attempt to migrate the Ring Light values. See PCD-121426.

CAD

- Functionalities from the **Optimize Path** dialog box (**Edit | Optimize Path**) and **Auto Create Clearance Moves** dialog boxes (**Operation | Graphic Display Window | Clearance Moves | Auto Insert Moves**) are now standard with CAD++. The IP_MEASURE license option no longer needs to be enabled for these to work. See PCD-124307.
- CAD GD&T characteristic IDs now support files that are in the CATIA v5 format. See PCD-21965.

CMM I++

- The DriverVersion property is available for the "IMachine" PC-DMIS COM interface. This read-only property returns the driver version for your measurement machine. It returns version information from the machine interface with the call driver_get_version. See PCD-123675.
- We added complete temperature compensation support (reading the temperature, and using all temperature modes) to the I++ client for the technology server. If the UseTemperatureCompensationV2 registry entry is set to True, you can change the temperature sensors from the I++ registry settings when running from an I++ DMS Client interface. See PCD-105865.

GD&T Selection

- We added a tool to PC-DMIS that enables you to write the characteristic ID for a given model so that you can use the characteristic ID or balloon number mapping tool. See PCD-124588.
- You can display a Product Manufacturing Information (PMI) report for PMI elements (embedded CAD GD&T callouts) that have not been imported as commands into PC-DMIS. Selecting the **Operation | Graphic Display Window | GD&T Selection | View GD&T Not Selected** menu option produces a report in a window that is similar to the Invalid GD&T report (**Operation | Graphic Display Window | GD&T Selection | View Invalid GD&T for Selection**). See PCD-123428.
- The Maximum Material Condition (MMC) and Least Material Condition (LMC) to Concentricity and Coaxiality FCF dimensions support the ISO 1101 standard. See PCD-127924.

- We added the **Use characteristic ID naming** check box to the **General** tab in the **Setup Options** dialog box (**Edit | Preferences | Setup**) for CAD and CAD++ systems. This check box specifies how PC-DMIS names the features that you import from embedded CAD GD&T callouts (PMI). By default, the check box is cleared (PC-DMIS uses feature names, instead of the characteristic IDs from the native CAD model, for feature naming).

The value for the `UseCharacteristicID` registry entry specifies whether PC-DMIS uses characteristic IDs for imported feature names whenever an import of an embedded CAD GD&T callout occurs. If the value is True, PC-DMIS uses characteristic IDs. If the value is False (the default), PC-DMIS uses feature names. See PCD-123025.

Graphics

- You can use the new **Show Rotation Widget** icon on the **Graphic Items** toolbar (**View | Toolbars | Graphic Items**) to show or hide the Rotation Widget for the CAD model. See PCD-124997.
- We added the **Rotation Widget** area to the **Trihedron** tab in the **CAD and Graphic Setup** dialog box (**Edit | Graphic Display Window | Trihedron**). You can use the options in this area to change the axes colors for the CAD Rotation Widget. See PCD-125715.
- The **Characteristic ID** box in the **CAD Information** dialog box (**View | CAD Information**) shows the Characteristic ID for a CAD GD&T object when you click on that CAD GD&T object in the Graphic Display window. You can also use this ID box to do case-insensitive searches of CAD GD&T objects. See PCD-106408.

- The **Surface Edges** tab in the **CAD and Graphic Setup** dialog box (**Edit | Graphic Display Window | Screen Color**) enables you to change the color and line width of surface edge lines. See PCD-124303.

Mesh

- New options on the **Mesh** toolbar enable you to perform these mesh cross-section functions:
 - Create mesh cross sections
 - View or hide all nominal (black) cross-section polylines
 - View or hide all measured (yellow) cross-section polylines (COP and mesh)
 - Start or exit the slide show to view a cross section in 2D
 - Navigate through the COP and mesh cross sections using the **Show the previous Cross Section** and **Show the next Cross Section** buttons

See PCD-127945.

Pointclouds

- By default, when you import pointcloud data into a COP, the imported data replaces any existing data. The **Append** check box has been added to the **Import Pointcloud Data** dialog box (**File | Import | Pointcloud**). You can use this check box to append new pointcloud data to existing data. See PCD-21717.
- We added the **Show distribution curve** and **Show distribution percentages** check boxes to the **Color Scale Editor** dialog box. You can use these options to show or hide the colormap histogram curve and percentage values at the different tolerance levels. These options are available for the Surface Colormap and Point Colormap operators. See PCD-120027.

- If your license is enabled with the appropriate options, the **Graphic Items** toolbar (**View | Toolbars | Graphic Items**) displays these buttons:
 - **Show All COPs** - This button shows or hides all COP features and their labels.
 - **Show all Meshes** - This button shows or hides all mesh data objects and their labels.

See PCD-126886.

- The graphical probe image for the Romer Portable Arm Integrated Scanner has been updated. See PCD-124552.
- You can read the current scan settings (the RDS scanning profile) for an LAS-20-8 scanner. When you double-click the scanner button, the RDS profile changes to the next profile. To verify that the scanning profile changed, view the new profile in the RDS Scanning Widget window. See PCD-122858.
- When you use a portable arm or laser tracker to scan, PC-DMIS automatically rotates and zooms the pointcloud in real-time in the Graphic Display window to show the proper view. This is done with the **Auto Rotate** check box and the options in the **Zoom** area in the **Laser Scan Display Properties** tab in the Probe Toolbox (**View | Other Windows | Probe Toolbox**).

If you select the **Auto Rotate** check box, the pointcloud automatically rotates in the Graphic Display window based on the laser line orientation. The rotation occurs even if you are not scanning. This feature enables you to position the scan line on the part before triggering a scan pass. If you clear this check box, no rotation occurs in the Graphic Display window while laser scanning. The check box is selected by default.

The **Zoom** options are:

- **None** - This option disables auto zoom. PC-DMIS Portable uses the last manual user-defined zoom setting to show the pointcloud scan in the Graphic Display window.
- **Auto** (default) - If you select this option, the graphic display zooms into a close-up view, centered in the middle of the laser scan line. As you scan more of the part, the Graphic Display window zooms out to show the collected pointcloud data.
- **Custom (%)** - To set the zoom percentage, select this option. 100% indicates that the zoom factor is set using the actual part size (a 1:1 relationship). You can set the zoom percentage larger to get a close-up view of the scan, or set it smaller to see more of the pointcloud at a reduced size. For example, 50% is half size.

See PCD-120746.

- The Generic OFFLINE TCP/IP Import Pointcloud function enables you to import a pointcloud from a client application into PC-DMIS (the server application). When the new pointcloud data file is received, PC-DMIS automatically executes the inspection routine offline.

To turn the function on and put PC-DMIS in a “watch” state, click the **TCP/IP Pointcloud Server receive data** button on the **Pointcloud** toolbar (**View | Toolbars | Pointcloud**). (This button appears only when you use PC-DMIS in offline mode.) In this mode, PC-DMIS is ready and waiting to receive a pointcloud file. The client application must initiate sending the pointcloud data.

See PCD-126918.

- We added the ability to extract a Laser auto feature from a mesh data object through the **Auto Feature** dialog box. You can select the reference data object - Mesh or COP - from the **Reference** list in the **Advanced measurement options** area.

These mesh laser features are supported: Surface Point, Edge Point (including multiple feature creation), Plane, Circle, Round Slot, Square Slot, Flush & Gap (including multiple feature creation), Polygon, Cylinder, Cone, and Sphere.

All mesh vertices that fall within the feature extraction zone, defined by horizontal and vertical clipping, are considered. You can view these orange points by selecting the **Show/Hide segregated points** button. You can view the green measured vertices by selecting the **Test** and **Show/Hide segregated points** button on the **Laser Scan Properties** tab.

See PCD-122663.

Portable

- You can automatically resize the comments that appear in the Probe Readouts window through the **Automatically resize font** option in the **Prompt history** area in the **Probe Readouts Setup** dialog box. If you select the option, PC-DMIS automatically resizes the font size of the operator comments in Report commands based on the value for the `ReadoutDisplayFont_AutoHistoryFontSizeRatio` registry entry. The registry entry's default value is 0.5, which equates to half the font size of the XYZ values. See PCD-121283.
- We updated the interface for the Faro arm with contact probing capability to 64-bit. See PCD-110945.

- We updated the probe management of Leica Laser Trackers. When you create a measurement routine, PC-DMIS automatically loads the last probe (reflector) that was used. You can edit and change the probe as needed. If the tracker is locked onto a smart probe (such as a T-probe or LAS scanner), then PC-DMIS automatically loads that probe. See PCD-116822.

Reporting

- PC-DMIS has controls to set the line width for the nominal, measured, and tolerance lines of an Analysis view. See PCD-92537.
- The PRINT command now supports multiple reports and the use of a variable. See PCD-117603.

Teamcenter

- The Teamcenter integration tool's **Teamcenter Setup** dialog box (**File | Teamcenter | Setup**) has a **Create** button. Click this button to create a dataset location to store probe files. See PCD-126846.

Tool Changers

- User input of a C wrist angle is now supported for ACR3 tool changers. See PCD-126267.

Tracker

- We updated the management of measurement modes for Leica Laser Trackers. When you create a measurement routine, PC-DMIS remembers the last-used measurement mode. When you open a measurement routine, PC-DMIS remembers and sets the last-used measurement mode in that specific measurement routine. If a Tracker command is inserted into the measurement routine, PC-DMIS sets the current mode based on the cursor position in the Edit window. See PCD-120647.

- Continuous scanning with a Tracker Reflector probe or T-Probe are now modes in PC-DMIS Portable. The continuous scanning mode uses the **Time delta (sec)** or **Distance delta (mm)** value, which is set on the **Probing** tab in the **Parameter Settings** dialog box (**Edit | Preferences | Parameters**).

From the **Tracker Operation** toolbar, you can choose the mode: **Continuous Distance** or **Continuous Time**. From the **Quick Start** dialog box, select the feature that you want to scan (such as a Plane or Scan feature).

- If the mode is set to **Continuous Distance** or **Continuous Time**, you can also use the A button on the AT960 T-Probe to start and stop the continuous scan (same as for the AT403 remote control).
- If the mode is not set to **Continuous Distance** or **Continuous Time** when you use the AT960 T-probe, you can hold down the D button to perform a continuous scan. When you release the D button, the mode returns to the previously-selected mode (such as the Fast mode).

When you finish scanning a feature (such as a circle or plane), compensate correctly, and then press the **END** button.

You can also insert **Continuous Time** and **Continuous Distance** modes into the measurement routine as [TRACKER](#) commands.

See PCD-120533.

User Interface

- You can click the drop-down arrow on the **Gage** button on the **QuickMeasure** toolbar to select the **Caliper** or **Temperature** gage option. You can also use the **Insert | Gage | Caliper** and **Insert | Gage | Temperature** commands to insert the gages. When you view the gage in Command mode, the type is shown as GAGE. See PCD-118471 and PCD-119076.

Information about this Release

We at Hexagon Manufacturing Intelligence are proud to bring you PC-DMIS 2018 R1. This platform brings together new aspects of the software for the development of a complete manufacturing process control solution. Available in this release are variations of the software designed to assist with every aspect of the fabrication and quality control process. The newly created packages include the established PC-DMIS Laser, PC-DMIS NC, PC-DMIS Vision, PC-DMIS Pro, PC-DMIS CAD, and PC-DMIS CAD++ platforms.

The testing of this version has been significant. We'd like to take a moment to discuss this process and also make you aware of the various components of testing.

Testing consists of two parts. These can be described as functional testing and integration testing.

- The vast majority of testing effort goes on in the functional area. This is the testing that determines that specific functions that are core to the software, regardless of what type of machine is used, are working correctly.
- The integration testing is essentially a testing of the interface with a particular type of machine.

In the ideal scenario, Hexagon Manufacturing Intelligence would have access to at least one of every piece of hardware running the software that is operating in the field. However, in practical terms, this is impossible. This integration test plan is then performed on as many types of machines as we have available.

Should you experience problems with your system after you install PC-DMIS 2018 R1, it could possibly be an integration problem. If it is a problem of this nature, it will probably be evident immediately upon first use of the possibly untested configuration. To report any integration problems, see "[Contact Hexagon Manufacturing Intelligence](#)". Should such a problem materialize on a commercial release, you will be given the highest priority for correcting these problems.

For existing users of the software who currently have earlier versions of the software installed, it is advised that you install PC-DMIS 2018 R1 into a new directory. In this way, you can be assured of continuous use of the existing version should problems arise with this newer version.

Installing the Software

To install the software, follow these steps:

Step 1: Check System and Hardware Requirements

Before you attempt to install a new version, ensure that you meet the system and hardware requirements discussed above in "[Recommended System Requirements](#)". You must also have a USB portlock or valid software license for the installation to work. Your IT specialist can help you with this information.

- To get your computer's properties, highlight the **My Computer** icon, right-click on it, and select **Properties**.
- To check the display properties for the graphics card, select **Start | Settings | Control Panel**, and then select **Display and Settings**.

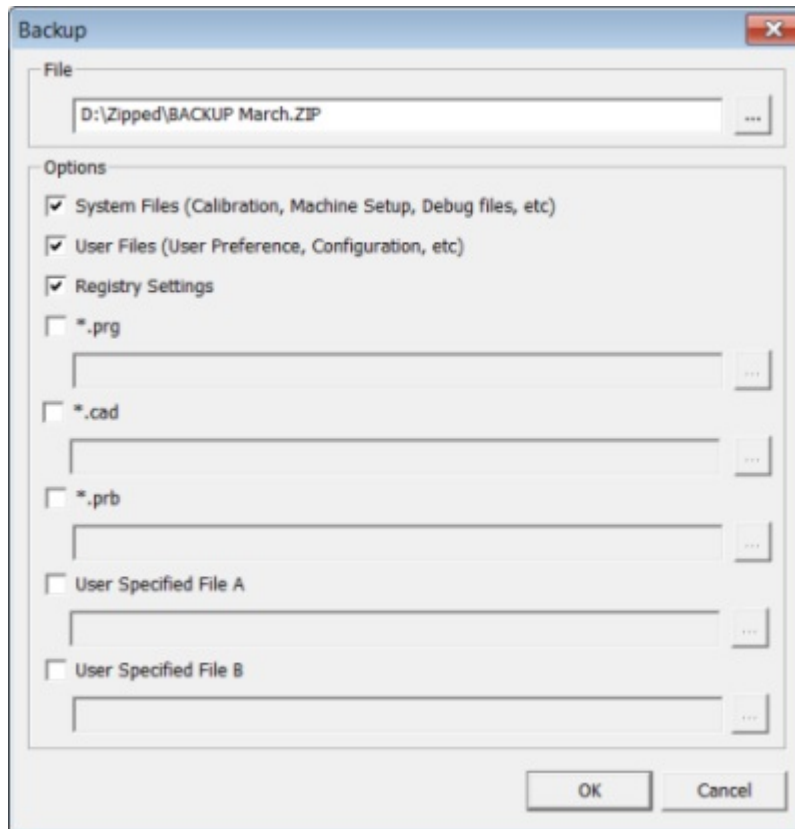
Step 2: Log on as an Administrator

To install and run your new version for the first time, you must be logged on as a user with administrator privileges.

Step 3: Back Up Existing Settings

Back up your settings from your previous version. By default, PC-DMIS 2018 R1 attempts to migrate existing settings from previous installs on the same computer, even from old versions of the software where settings were stored in the pcdlrm.ini file.

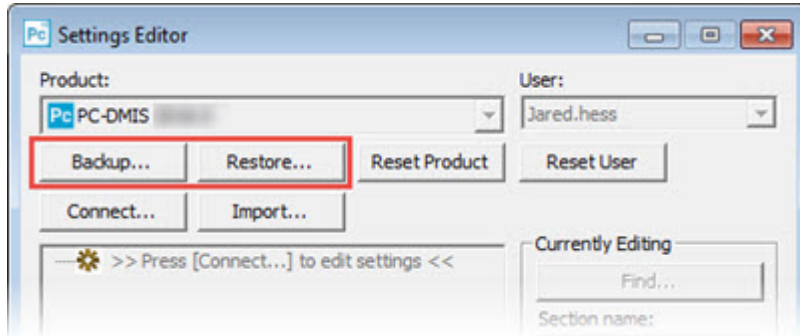
- If your current version uses the pcdlrn.ini file for its settings, back up your pcdlrn.ini file. This file is in the Windows system directory. Save a copy of the file in a safe place.
- If your current version uses the PC-DMIS Settings Editor, back up your PC-DMIS Settings Editor data. To do this:
 1. Start the Settings Editor.
 2. Click the **Backup** button (or **Export**). The **Backup** dialog box appears:



Backup dialog box

3. In the **File** box, define a safe location to save the backed-up files, and give the file a .zip extension.
4. Select the first three check boxes, and click **OK**.

If you replace your computer or transfer settings that reside on another computer, you can use the Settings Editor's **Backup** and **Restore** buttons:



Backup and Restore buttons

For more information on the backup and restore functionality, refer to the Settings Editor documentation.

Backing Up Machine Files for an Xcel CMM or a Sharpe Controller

If you are using a Brown and Sharpe Xcel CMM or a CMM that uses a Sharpe controller, and you are going to install PC-DMIS 2018 R1 on a new computer, save copies of the following CMM machine files from your previous version to a safe place:

- comp.dat

Starting with PC-DMIS 2013 MR1, the comp.dat file moved to:

`C:\ProgramData\WAI\PC-DMIS\version`

- download

The files are located in the installation (root) directory for all software versions prior to 2013 MR1, regardless of the operating system.

The location of the installation (root) directory is:

`C:\Program Files\WAI\PC-DMIS version`

For versions of PC-DMIS up to and including 3.7 MR3, the location of the installation (root) directory is:

C:\PCDMISW

Backing Up Machine Files for a CMM with a DEA Controller

If you are using a DEA or other CMM with a DEA machine controller, and you are going to install PC-DMIS 2018 R1 on a new computer, save copies of the following CMM machine files from your previous version to a safe place (the files vary according to the type of CMM):

- cosdat1.bin
- compens.dat

Starting with PC-DMIS 2013 MR1, the compens.dat file moved to:

C:\ProgramData\WAI\PC-DMIS*version*

- Fzyfile.txt
- Rcxfile.txt
- Rmxfile.txt
- Any file with your machine's serial number in its name

The files are located in the installation (root) directory for all software versions prior to PC-DMIS 2013 MR1, regardless of the operating system.

The location of the installation (root) directory is:

C:\Program Files\WAI\PC-DMIS *version*

For software versions up to and including 3.7 MR3, the location of the installation (root) directory is:

C:\PCDMISW

Step 4: Install the Software

The following steps run you through a typical installation. Your installation screens may differ if you are running a different version of PC-DMIS 2018 R1 or if you are installing a custom build with additional options. In addition, your license may be configured with different options.


1. Locate the installation file on your installation media; or, if you downloaded it, open the directory that contains the downloaded file. The name of the installation file is:

Pcdmis2018_R1_master_##.#.###.#_x64.exe

The # symbols represent the version and build numbers.

2. Double-click this executable file to open the installation program.
3. If a security warning appears, click **Run**.
4. From the initial license screen, read the license agreement, and select the **I agree with the License terms and conditions** check box.
5. In the box at the bottom, you can define the installation folder. By default, the file installs to:

C:\Program Files\Hexagon\PC-DMIS 2018 R1 64-bit

To change the folder, either click the browse button () and choose a folder, or in the box, type a new path.

6. Once you accept the license agreement and choose the installation folder, click **Next** to open the licensing screen.
7. From the licensing screen, choose your license type:
 - **LMS (Software) License** - If you have a software license (called an Entitlement ID), select this option. Complete the boxes beneath this option.
 - **LMS License Server** - If you have a license server to connect to, select this option and then type the server address.
 - **HASP** - If you have a portlock (a physical USB device with the licensed options), ensure that it is connected to your computer, and then select this option.

For help on how to set up an LMS license, see "[LMS License Setup](#)".

8. Click **Next**.
9. Choose to install additional software. If you chose a custom installation path, the additional software still installs to your default measurement routine directory (usually C:\Program Files\Hexagon\).
 - **INSPECT** - This is version 3.1 of the INSPECT operator interface to PC-DMIS 2018 R1. You can open PC-DMIS 2018 R1 from within INSPECT to generate reports and execute measurement routines. You can execute measurement routines from the local directory or the SMART Quality web server.
 - **PDF Converter 5.0** - This third-party tool converts PC-DMIS 2018 R1 reports to PDF outputs.
 - **NOTIFICATION CENTER** - This application sends notifications from a client application, such as PC-DMIS 2018 R1, to your computer or measurement device. It does this during certain events, such as when the machine has an error.

Join the Hexagon Customer Experience Improvement Program - To help improve the product and send usage data to Hexagon Manufacturing Intelligence, select this check box. To opt out of sending usage data, clear the check box. For more information about this program, visit the [Hexagon Customer Experience Improvement Program](#) web site.

You can also choose to send usage data to Hexagon Manufacturing Intelligence after you install the software. For more information, see "[Updating the Software](#)".

10. Click **Install** to start the installation. A progress bar shows the overall progress.

11. When the installation finishes, a screen shows any warnings or errors. It also contains these options:

- **Launch PC-DMIS** - To launch PC-DMIS 2018 R1 now, select this check box. If this is your first time installing this version on this computer, you should do this to initialize registry entries. For more information, see "[Administrator Privileges Explained](#)".
- **Show Release Notes** - To display a Readme.pdf file that shows what is new or has changed in this release once you click **Close**, select this check box.

12. Click **Close** to close the installation program.

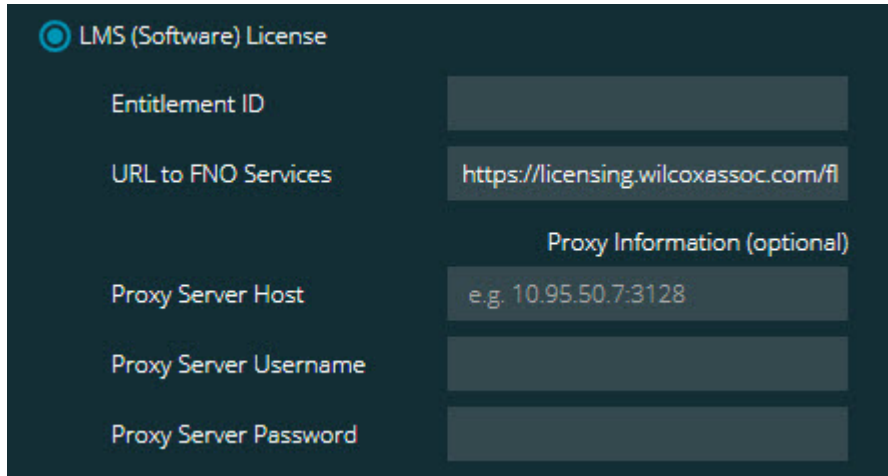
LMS License Setup

This topic provides information if you need to:

- Set up your LMS (software) license
- Connect to an LMS license server
- Update your LMS license
- Provide licensing information to the installer from the command line

LMS (Software) License

If you chose **LMS (Software) License** on the [licensing screen](#), and the installation cannot find a valid license on your system, you need to complete these options:



The screenshot shows the following configuration options for the LMS (Software) License:

- Entitlement ID**: [Empty text box]
- URL to FNO Services**: `https://licensing.wilcoxassoc.com/fl`
- Proxy Information (optional)**:
 - Proxy Server Host**: `e.g. 10.95.50.7:3128`
 - Proxy Server Username**: [Empty text box]
 - Proxy Server Password**: [Empty text box]


LMS (Software) License option

1. Complete the options:

- **Entitlement ID** - If you have an Entitlement ID, type or paste the ID you were issued in the box. If you have supplied this value in a previous installation, the installer pulls in that value from the registry.
- **URL to FNO Services** - This points to the URL that verifies your license. Ensure that it has this URL:

`https://licensing.wilcoxassoc.com/flexnet/services`

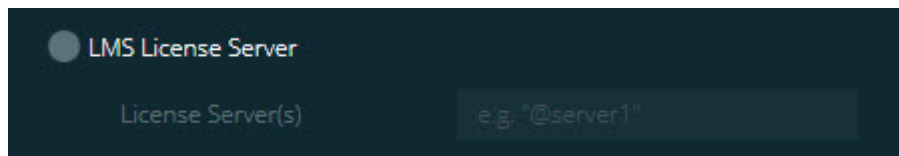
- Proxy information - If your computer is on a network where you need a proxy server to reach the Internet, contact your IT specialist to get this information. Enter the server host, user name, and password.
2. If you do not have an Entitlement ID and you need to activate your license offline, use the CLM Admin application. From the CLM Admin application, choose **Activate new licenses**, and follow the on-screen instructions.



For information on how to use the CLM Admin application, consult the Hexagon Client License Manager (CLM) Software documentation (pcdmisclm.chm). You can find this in the sub-folder for your language (such as the **en** directory for English).

3. Click **Next**. The installation software connects to the Internet and activates your license. It then installs the FLEXnet Licensing Service required to use LMS licenses.

LMS License Server



LMS License Server option

If you use a license server, select this item, and then type your license server name in the **License Server(s)** box. The format of this line of text is *port number@server name*, where *port number* is the TCP port number for the licenser server, and *server name* is the name of the server.

The default TCP port number is 27000. If you don't identify a specific port, the license server uses the default. For example, these mean the same thing:

@server1

27000@server1



If you use this option, place the "@" symbol in front of the server address. If the "@" symbol is left off, the installation process attempts to look locally for the license. This may result in an error.

You can also specify multiple license servers. You can separate them with semicolons. For example, suppose that you have three license servers called licenseserver1, licenseserver2, and licenseserver3, and all of them use the default TCP port. You can specify all of them in a single line of text, like this:

```
@licenseserver1;@licenseserver2;@licenseserver3
```

Updating Your LMS License

Once you finish with the license setup and install PC-DMIS 2018 R1, it checks for license updates when it starts and after every eight hours of running. If a license update is available, this notification appears:

PC-DMIS

Updates are available for your PC-DMIS license. Applying them now will require PC-DMIS to restart. Would you like to apply the updates now?

To apply the update, click **Yes**. If you click **No**, PC-DMIS 2018 R1 displays the message every eight hours of running or the next time it runs.

- If an option or a feature is added, you are given the choice to apply the changes. A pop-up message displays in the system tray if you apply the changes.
- If an option or feature is removed, a message that requests you to restart PC-DMIS 2018 R1 appears. A pop-up message also appears in the system tray to inform you of this.
- If an option or feature is obsolete, it is automatically removed.



After you apply an update, restart PC-DMIS to ensure that it functions properly.

Providing LMS Licensing Information to the Installer from the Command Line

You can send LMS licensing information to the installer through command line parameters. For more information, see "[Providing LMS Licensing Information to the Installer from the Command Line](#)" in Appendix A.

Administrator Privileges Explained

Software versions earlier than version 2012 require that you run the software as an administrator because some system settings (such as the last probe used, wrist angles, and other items) were shared among all users on that computer. This required that these settings were placed in the LOCAL_MACHINE section of the Windows registry instead of in the CURRENT_USER section (for user-specific settings). Making changes to settings in the LOCAL_MACHINE section requires administrator privileges.

In PC-DMIS version 2012 and later, the settings mechanism used by PC-DMIS changed to only require administrator access the very first time it runs at the end of the installation. From that point forward, standard user access is sufficient.

The PC-DMIS installer has a flag that is built into the setup executable file (Pcdmis2018_R1_master_###.###.#_x64.exe) that requires the setup process to run with administrator privileges. If the current user has lesser privileges, the setup program displays a prompt to provide a user name and password of an account with administrator privileges.

Once the installation finishes, the first time you run PC-DMIS 2018 R1, you must launch it with administrator privileges. If you mark the [Launch PC-DMIS after the install finishes check box](#) when the installation finishes, PC-DMIS 2018 R1 does this automatically by passing the original privilege level of the installer onto PC-DMIS.

Note, however, that if you do not mark this check box, you will need to explicitly right-click on the shortcut and select **Run as administrator** as described in [step 6](#).

For more information on the file system and registry rights that PC-DMIS 2018 R1 requires, see "[Required User Access Rights](#)" in Appendix B.

Step 5: Copy Files after Installation

If these files are available, copy them from your old PC-DMIS installation directory to the directory where you installed the newer version:

- Sysparam.dat
- Downl.oad
- Fzyfile.txt
- Rcxfile.txt
- Rmxfile.txt

Starting with PC-DMIS 2010 MR2, PC-DMIS automatically copies common system files to the program data files directory when you install a newer version of PC-DMIS.

The comp.dat, compgrid.at, comp.enc, and compens.dat volcomp files used with volcomp methods 13 (ASI) and 14 (BNS) must be in the program data files directory. When you install a newer version of PC-DMIS, these files automatically copy to the program data files directory for the new version. For the default path location of this directory, see "[Understanding File Locations](#)" in Appendix B.

For additional information on volumetric compensation files and setup, see the Machine Interface Installation Manual (MIIM).

Copying Machine Files for an Xcel CMM or a Sharpe Controller

If you are using a Brown and Sharpe Xcel CMM or a CMM that uses a Sharpe controller, and you installed PC-DMIS 2018 R1 on a new computer, copy the backed-up CMM machine files to the following location on the new computer:

C:\Program Files\Hexagon\PC-DMIS *version*

For more information about these files, see "[Backing Up Machine Files for an Xcel CMM or a Sharpe Controller](#)".

Copying Machine Files for a DEA CMM with a DEA Controller

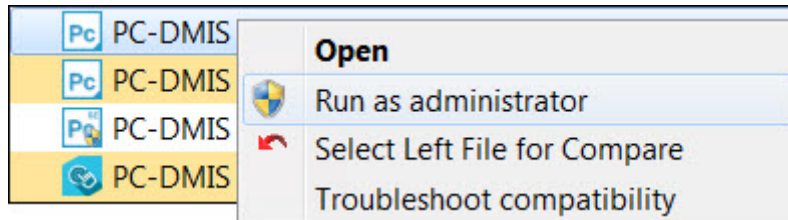
If you are using a DEA CMM with a DEA machine controller, and you installed PC-DMIS 2018 R1 on a new computer, copy the backed-up CMM machine files to the following location on the new computer:

C:\Program Files\Hexagon\PC-DMIS *version*

For more information about these files, see "[Backing Up Machine Files for a DEA CMM with a DEA Controller](#)".

Step 6: Launch the Software for the First Time

1. When you run PC-DMIS 2018 R1 for the first time, select **Start** and start typing **PC-DMIS 2018 R1 64-bit**.
2. From the list of shortcuts in the **Start** menu, right-click on either the **Online** or **Offline** icon, and then select the **Run as administrator** option (required only if the **Launch PC-DMIS** check box wasn't checked at the end of the installation).



Run as administrator option

This allows the program to write the needed machine-specific settings.

3. If your previous version used the pcdlrn.ini file, PC-DMIS 2018 R1 asks if the settings in your PCDLRN.INI file should be used as your registry settings. Click **Yes** at the prompt. Otherwise, PC-DMIS 2018 R1 loads in the factory defaults.

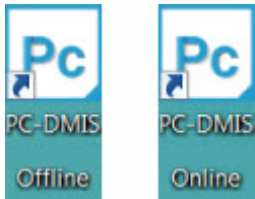
If your previous version used the Settings Editor, do the following to use your previous software settings:

- a. Close PC-DMIS 2018 R1.
- b. Launch the PC-DMIS Settings Editor from the Start menu.
- c. Once it opens, click **Import**, and open the PCDRegFile.dat file you backed up in the "[Step 3: Back Up Existing Settings](#)" section of this document. PC-DMIS 2018 R1 imports your settings.
- d. Close the PC-DMIS Settings Editor.

4. When you launch PC-DMIS 2018 R1, the **What's New** information appears in your default web browser. You can also choose to display the **What's New** information after you launch PC-DMIS 2018 R1. To do this, click **Help | What's New**.

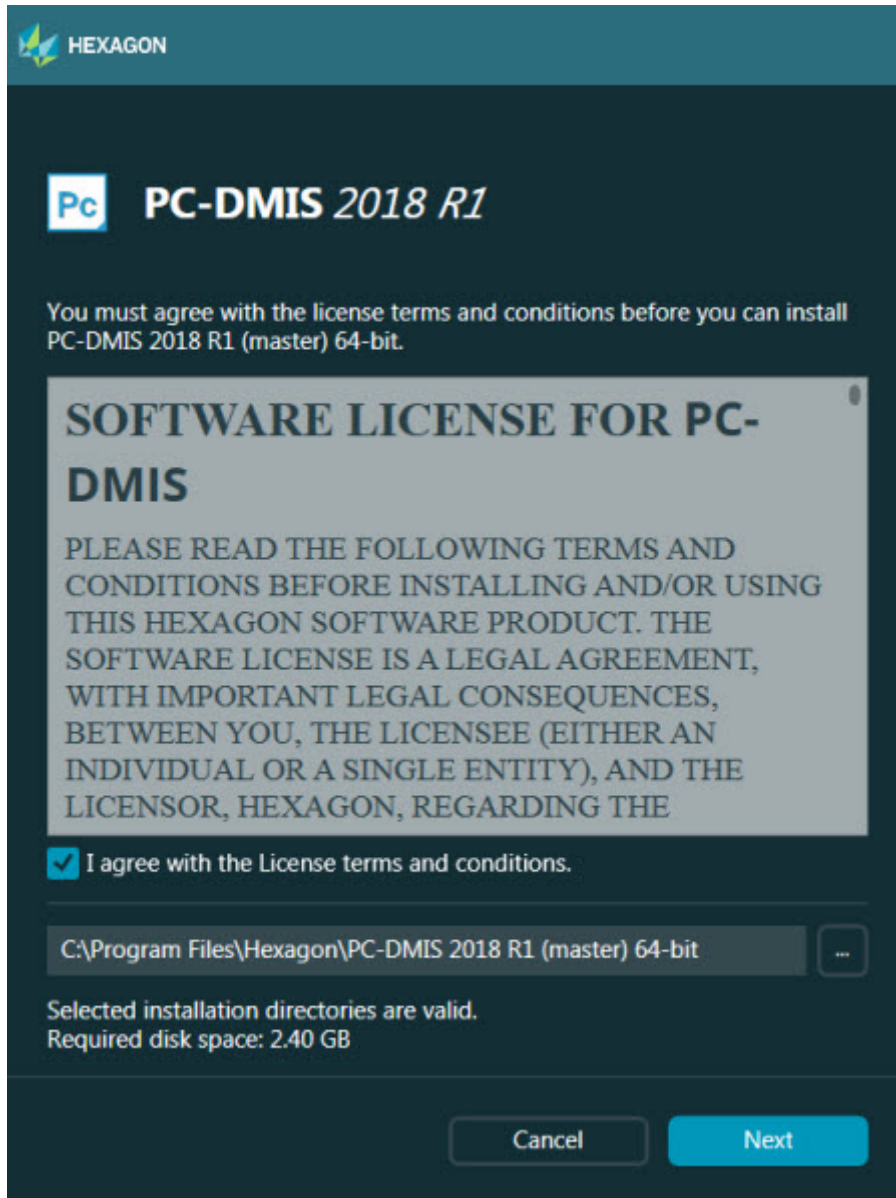
Subsequent Startups

For subsequent startups, you can launch PC-DMIS 2018 R1 normally by clicking the usual **Offline** or **Online** shortcut:



PC-DMIS 2018 R1 shortcuts

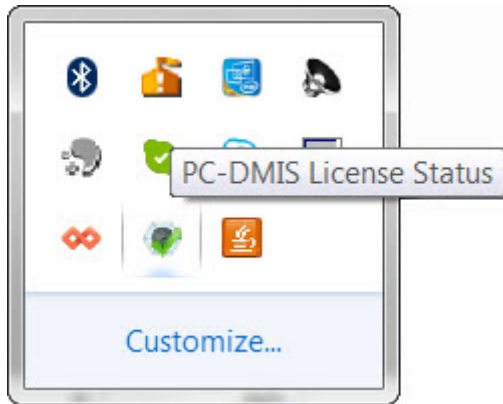
Once PC-DMIS 2018 R1 starts, the **Software License** screen displays the current license agreement. Read the agreement carefully and then at the bottom, click **I agree with the License terms and conditions** to proceed:



Software License screen

Once PC-DMIS 2018 R1 runs, an icon displays in your system tray. If your portlock or license is programmed correctly, the icon displays a green check mark as shown below:

PC-DMIS 2018 R1 Release Notes



Message for valid PC-DMIS license

If your portlock is not connected or is not programmed correctly, or if you are using an LMS license and your software has not been properly licensed, the icon appears with a red exclamation point overlay. A pop-up message says that the license is disconnected:



Message for disconnected PC-DMIS license

If the license is disconnected, PC-DMIS 2018 R1 functions normally, but after 5 minutes, it automatically closes. Be sure to save your data immediately before this occurs.

Note About CMMs Using RS-232 Communications

By default, PC-DMIS 2018 R1 communicates through the COM1 communications port. You need to change this port number to the number that Windows automatically created if a serial-to-USB adapter cable or serial adapter card was installed for communicating with an older RS-232 CMM.

To change the COM port number:

1. In Windows Device Manager, note the number that Windows assigned to the communications port on your computer. For help, refer to Windows Help.
2. Open PC-DMIS in online mode, and then open a measurement routine.
3. Select **Edit | Preferences | Machine Interface Setup**.
4. In the **Comm port** box, enter the port number from Windows Device Manager.

Updating the Software

By default, PC-DMIS automatically checks for software updates if you are connected to the Internet. If it detects that an update is available, the HEXAGON UPDATES application opens to inform you of the update. You can then download and install these updates.

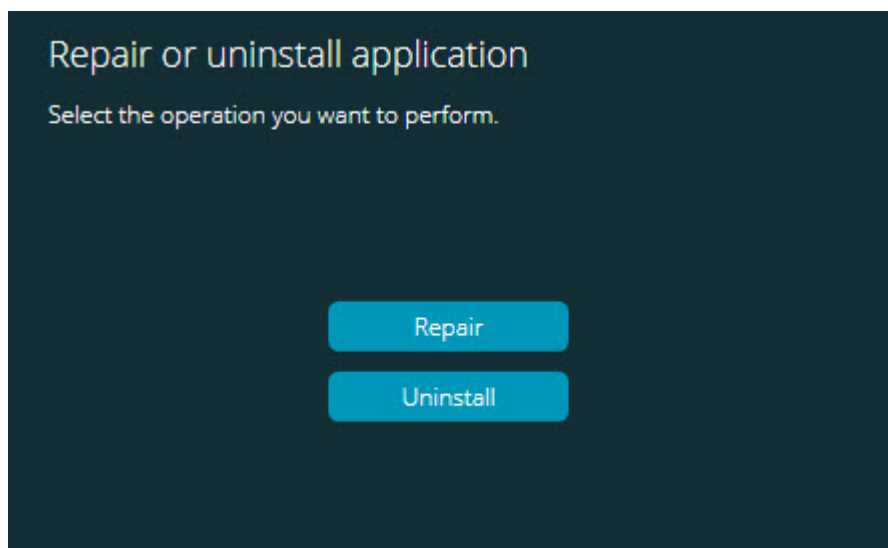
You can also manually check for updates. To do this, select **Help | Check for Updates** and then select the desired options in the HEXAGON UPDATES updater application.

The HEXAGON UPDATES updater application contains the **Settings** dialog box. You can use the **I would like to participate** option in the dialog box to choose whether or not to join the Hexagon Customer Experience Improvement Program and send usage data to Hexagon Manufacturing Intelligence. Hexagon Manufacturing Intelligence uses this data to improve the user experience. For more information about this program, visit the [Hexagon Customer Experience Improvement Program](#) web site.

For more information on the updater application, see "Updating the Software" in the "Getting Started" chapter in the PC-DMIS Core documentation.

Repairing or Removing an Installation

You can also repair or remove an installation as needed once you install it. To do this, double-click the Pcdmis2018_R1_master_##.#.###.#_x64.exe file as if you were beginning the installation process. The setup displays a screen with these options:



"Repair or uninstall application" dialog box

- **Repair** - This option reinstalls all of the product files as they were originally installed. This option may help resolve issues where an installation didn't properly install all of the files.
- **Uninstall** - This option removes the application from where you installed it. You can also use the **Programs and Features** control panel item in Control Panel to uninstall the application.

Running the Software in Another Language

The initial installation setup file for PC-DMIS 2018 R1 contains the user-interface files for all of the supported languages. When you install PC-DMIS 2018 R1, it installs the language files based on your operating system's language.

To run PC-DMIS 2018 R1 in a language other than the operating system's language, select **File | Language**, and then click the desired language. PC-DMIS shows a message that says the application will be shut down and restarted. Click Yes to continue. PC-DMIS 2018 R1 immediately closes and then reopens in the selected language.

To get the help content available in a non-English language, see "[Installing Non-English Help Files from Language Packs](#)".

Installing Non-English Help Files from Language Packs

The English help files are the only help files included in the main installation package. They are installed regardless of the installation language. However, non-English help files are not included in the main installation file.

This means that if you install a non-English language, or if you switch to a non-English language, in order to see any help content at all, you *must* also install a language pack for that language. Otherwise, if you try to access the help file, PC-DMIS 2018 R1 displays an error message indicating that it cannot find the help file.

A language pack contains all of the help content for that language. To install a language pack, do the following:

1. Locate the desired language pack (and .exe file) on your installation media or download it from the Internet here:

`ftp://ftp.wilcoxassoc.com/PC-DMIS-
Versions/Release/2018_R1/Release/x64/Lang/`

2. Run the .exe file and follow the setup instructions. You do not need to have administrator access to do this step.

This procedure installs the help content into the appropriate two-letter language subdirectory where you have PC-DMIS 2018 R1 installed. You can then switch to that language in the software and access the help content.

Troubleshooting

This topic provides information for you to troubleshoot installation, startup, and software update problems.

Startup is Slow

Problem: You use a computer with at least the recommended system requirements as detailed in the "[Recommended System Requirements](#)" topic, and it takes longer than 30 seconds to launch the software.

Description: This happens if you try to run PC-DMIS 2018 R1 on a Windows 7 computer, but you didn't mark **Run as administrator** on the installation wizard. This results in a problem loading the HASP driver. Note that this problem only occurs when you install with a HASP license type, as discussed in "[Step 4: Install the Software](#)".

Solution: Uninstall PC-DMIS 2018 R1 and then reinstall it by right-clicking on the installation file and choosing **Run as administrator**.

Updating the Software Results in a "(407) Proxy Authentication Required" Message

Problem: You use the **Help | Check for Updates** menu option to update the software, and when the Web Updater opens, it shows: "The remote server returned an error: (407) Proxy Authentication Required."

Description: A firewall on your computer may be blocking the updater from connecting to the server.

Solution: Check your firewall's settings and ensure that the following address is not blocked: **<http://www.wilcoxassoc.com/WebUpdater>**

Setting Up the Network to Send Crash Reports

Problem: PC-DMIS 2018 R1 cannot automatically send crash reports to Hexagon Manufacturing Intelligence even when the **/nocrashdump** software configuration switch is not being used. (This switch disables crash reports in PC-DMIS 2018 R1.)

Description: A firewall on your computer may be blocking the updater from connecting to the server. If PC-DMIS 2018 R1 crashes, it uses a PHP script over HTTP to send the crash report. If this fails, it then tries to send the report to crashreport@wilcoxassoc.com. It tries using the standard SMTP email protocol. If that fails, it tries to send the email through MAPI.

Solution: The crash report system needs to be able to use port 80 to get out to the server, <http://www.wilcoxassoc.com/>.

Installing on Top of an Existing Version Results in Unexpected Behavior

Problem: You installed on top of an existing version of the software, and now the software does not behave normally. Potential symptoms include:

- After you start up the software, you get a "Procedure Entry Point" error.
- When you select **Help | About**, it does not show the new build number.
- Reported bug fixes do not seem to be fixed, and PCDLRN.EXE does not have a newer date and time than the original release.

Description: Something did not install properly on top of the existing version.

Solution: Use Control Panel to completely uninstall the existing version and then reinstall the version you're trying to install.

Running the Legacy DPUPDATE.EXE Does Not Work

Problem: The legacy DPUPDATE.EXE does not run.

Description: If you run PC-DMIS 2018 R1 without administrator privileges, DPUPDATE.EXE does not work.

Solution: Run PC-DMIS 2018 R1 with administrator privileges.

Contact Hexagon Manufacturing Intelligence

If you are participating in the *technical preview* of PC-DMIS 2018 R1, please post your feedback in the appropriate technical preview forum located at www.pcdmisforum.com/forum.php. Please do not contact Hexagon Technical Support for technical previews.

If you are using the *commercially released version* of PC-DMIS 2018 R1 and would like further information or technical support, please contact hexagonmi.com/contact-us or visit hexagonmi.com/products/software. You can also reach Hexagon Technical Support by calling (1) (800) 343-7933.

Appendix A

Recommended System Requirements

Operating System

PC-DMIS 2018 R1 operates under 64-bit Windows 10, Windows 8.1, Windows 8, Windows 7, and Windows Vista. No other operating systems are supported.



When you use third-party drivers, you should contact your local Hexagon Manufacturing Intelligence representative to ensure operating system compatibility.

Running PC-DMIS inside a Virtual Machine (VM) is supported only if the VM supports OpenGL 3 or higher.



PC-DMIS Vision machines do not support 64-bit Windows 8.

The Matrox Framegrabber PC-DMIS Vision hardware component does not support a 64-bit operating system.

Microsoft .NET Framework

Microsoft .NET Framework 4.6.1 for Windows. If you do not have Microsoft .NET Framework 4.6.1, the PC-DMIS installer will install it for you.

RAM

- 4 GB of RAM or higher

The size of the CAD data file and the tessellation multiplier value used affect the amount of memory needed. These both affect the amount of tessellated facets needed to display the model. The smaller the tessellation multiplier value used, the more memory needed for the facets. For large CAD models, this could cause an "Out Of Memory" error. If this occurs, the current PC-DMIS session will be left in an unstable state and should be terminated.

The default tessellation multiplier value is 1.0. Setting a tessellation multiplier of 0.1 will result in a 10 to 20 percent increase in the memory required over the default value of 1.0. Decreasing the tessellation multiplier further to 0.01 will result in an additional 50 to 65 percent increase of memory required.

- 1 GB of video RAM

CPU

2 GHZ or higher quad core processor

Graphics

- For desktops: NVIDIA Quadro K620 graphics card
- For laptops: NVIDIA Quadro K1100M graphics card
- For laptops running PC-DMIS with an RS4 laser sensor: NVIDIA Quadro M3000M graphics card with 4 GB of memory

The graphics driver must support OpenGL 3.0 or higher. A warning message appears on PC-DMIS startup if the driver does not support OpenGL 3.0 or if your graphics driver is more than three years old.

Hard Drive

- 2 GB of free hard drive space plus allocated virtual memory of eight times the largest CAD file used
- SSD drive, HDD 10K, or two disks in RAID 0 mode (high-performance hard disk drive)

Display

Screen resolution of 1280 x 1024 or higher

Connectivity

- Two Ethernet ports. This may be required for specific installations in consideration of local needs, including but not limited to CMM systems where one port is required for controller communications and another for intranet/Internet communications.
- Two USB ports
- DVD drive
- HASP key (a physical USB portlock) or a software license



A HASP key does not act as general-purpose data storage; therefore, you cannot use a HASP key to store (download) arbitrary data from a computer. Similarly, you cannot use a HASP key to put (upload) arbitrary data on a computer. Also, only Hexagon Manufacturing Intelligence applications can read or write to a HASP key; other applications do not have this capability. As a result, you cannot use a HASP key to load and unload data to and from a computer.

Browser

Internet Explorer 10 or later

Anti-Virus Software

Hexagon Manufacturing Intelligence used the Sophos anti-virus tool to test PC-DMIS 2018 R1. The user will need to confirm the performance of any other anti-virus tool.

<http://sophos.com/products/enterprise/endpoint/security-and-control/>

Solutions for CMMs Using RS-232 Communications

If you are installing PC-DMIS 2018 R1 on a new or existing computer, but you have an older CMM model that uses RS-232 communications, then you will need to install one of these solutions on your computer:

- An external RS-232 serial-to-USB adapter cable plus the serial-to-USB adapter cable driver
- An internal serial adapter card with serial ports

Providing LMS Licensing Information to the Installer from the Command Line

You can send LMS licensing information to the installer by using the command line:

- If the installer is running in silent mode (**-q**) or basic silent mode (**-passive**), and the correct information is provided, everything runs without user interaction. The command switch **-q** displays the progress bar and handles installer errors. The **-passive** switch hides the user interface.
- If the installer is not running in silent mode, the information provided is used to populate the LMS activation form and skip the [license screen](#).
- Provide the **-?** to review additional command line arguments.

Descriptions of the parameters follow, along with examples.

Descriptions

USEMSLICENSING="1" - This flag is useful only if the system already has an LMS license that the user is using. It allows silent mode to work without having to prompt the user for a license choice. If the installer is not running in silent mode, it still allows the install process to skip the license type selection dialog (thus saving some time).

LMSENTITLEMENTID="*entitlement id*" - This parameter and value are useful on a new system where no LMS license was previously installed. It indicates that the user wants LMS licensing and provides an Entitlement ID to try and activate. When this value is specified, there is no need to specify **USEMSLICENSING**.

LMSLICENSESERVERS="server1,server2..." - This parameter is used on systems that communicate with a license server. It also allows the license type selection dialog box to be skipped and the installation to be done silently.

LMSPROXYHOST="proxyhostaddress" - This optional parameter gives the address of a proxy host. In silent mode, it is used directly in activation. In non-silent mode, it populates the activation form with this value.

LMSPROXYUSERNAME="user name" - This parameter is another optional parameter for the proxy user name. It behaves in the same manner as **LMSPROXYHOST**.

LMSPROXYPASSWORD="unencrypted password" - This parameter is another optional parameter for the proxy password. It behaves in the same manner as **LMSPROXYHOST**.

LMSURLTOFNOSERVICES="URL to FNO server" - This parameter is mostly for internal development. The default URL is to the production server. The new value can be used to override the default value and point to the development server.

Examples

On a brand-new system with a node-locked Entitlement ID, the following line installs PC-DMIS 2018 R1 in silent mode:

```
-q LMSENTITLEMENTID="99999-88888-77777-66666-55555"
```

On a system that already has a license, the following line installs PC-DMIS 2018 R1 in silent mode:

```
-passive USELMSLICENSING="1"
```


On a brand-new system using license servers, the following line installs PC-DMIS 2018 R1 in silent mode:

-passive LMSLICENSESERVERS="123.12.134.42"

On a brand-new system with no license, the following line skips the license type selection dialog box and populates the activation form:

LMENTITLEMENTID="99999-88888-77777-66666-55555"

LMSPROXYHOST="123.123.123.123" LMSPROXYUSERNAME="bob"

LMSPROXYPASSWORD="marley"

Appendix B

Understanding File Locations

The default file locations (path locations) for various user-specific settings and other files have changed in PC-DMIS 2018 R1 and later. These files are now stored in the following locations, based on each file's role.

Public Documents

Measurement routine, CAD, probe, and other files:

C:\Users\Public\Public Documents\Hexagon\PC-DMIS\2018 R1

Demo CAD files:

C:\Users\Public\Public Documents\Hexagon\PC-DMIS\2018 R1\CAD

Public Documents (Reporting Directory)

Report template, label template, rule definition, and color definition files:

C:\Users\Public\Public Documents\Hexagon\PC-DMIS\2018 R1\Reporting

Public Documents (Fixturing)

Fixturing files:

C:\Program Files\Hexagon\PC-DMIS 2018 R1 64-bit\Models\QuickFix

Program Data Files [Hidden]

Calibration files (such as comp.dat and compens.dat), setup files (such as tool.dat, toolc.dat, and usrprobe.dat), and other files:

C:\ProgramData\Hexagon\PC-DMIS\2018 R1

User Data Files

Files for toolbar and menu layout, lighting and materials, and settings:

C:\Users*user name*\AppData\Local\Hexagon\PC-DMIS\2018 R1

Where *user name* is your window's logon user name.

For more specific information on data files, see "Understanding Data Files" in the "Setting Your Preferences" chapter in the PC-DMIS Core documentation.



In addition, you can use the Settings Editor application to back up, restore, or clear user-specific files and settings. Rather than manually deleting or restoring individual files on your own, we recommend that you use the tools provided in Settings Editor instead. For more information, refer to the Settings Editor help file.

Required User Access Rights

PC-DMIS 2018 R1 requires read, write, and create access to the locations defined below in the file system and registry.

File System

Windows 10, Windows 8, Windows 7, and Windows Vista:

- C:\ProgramData\Hexagon\PC-DMIS\2018 R1
- C:\Users\Public\Documents\Hexagon\PC-DMIS\2018 R1
- C:\Users\UserName\AppData\Local\Hexagon\PC-DMIS\2018 R1
- Any user-specified folder locations for storing measurement routines, probes, subroutines, and so on

Registry

All of these versions have their own registry settings, which are stored in a version-specific registry key. The items shown below are for version 2018 R1.

- HKEY_LOCAL_MACHINE\SOFTWARE\Wow6432Node\Hexagon\PC-DMIS\2018 R1 Key and all sub keys
- HKEY_CURRENT_USER\Software\Hexagon\PC-DMIS\2018 R1 and all sub keys
- HKEY_USERS\DEFAULT\Software\Hexagon\PC-DMIS\2018 R1 and all sub keys

Notes

The first time you run a new version, PC-DMIS automatically copies the settings from the most recent version of PC-DMIS that is installed. For this to work, PC-DMIS needs to run with administrator privileges the first time you run it. During the installation, if you select the **Launch PC-DMIS** check box in the setup wizard, it runs PC-DMIS as an administrator and completes this first step.

This initial migration automatically sets read, write, and create permissions on the registry for the relevant keys.

If you are using fixturing or laser sensors, the following registry keys are stored back one level:

- HKEY_LOCAL_MACHINE\SOFTWARE\Hexagon\FxtServer
- HKEY_LOCAL_MACHINE\SOFTWARE\Hexagon\PC-DMIS\NCSSENSORSETTINGS
- It may be easier to just apply create/read/write privileges to the HKEY_LOCAL_MACHINE\SOFTWARE\Hexagon\ key and all sub keys to cover these also.

Appendix C

First-Time Installation with Flexible Fixturing

To be compliant with the permission rules for PC-DMIS products, files associated with fixturing are now located in this folder:

C:\Program Files\Hexagon\PC-DMIS 2018 R1 64-bit\Models\QuickFix

This allows access to the files without needing administrator privileges on the computer running PC-DMIS. To accomplish this, the following steps are required when you install PC-DMIS for the first time:

1. The first time you install PC-DMIS and FxtServerInterface, run the FxtServerInterface installation program for the first time with administrator privileges (as is required for the PC-DMIS installation).
2. When you run FxtServerInterface, a message states that the system will migrate all of your data files to the "FIVEUNIQUE" Documents folder described above.
 - If you choose **Yes**, the files are moved, and the original folder is deleted.
 - If you choose **No**, the files are copied, but the original folder is kept.

Once this is done, the files are moved (or copied), and you are able to run FxtServerInterface.exe without administrator privileges.